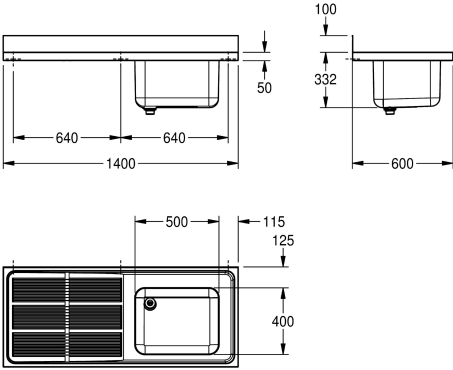




KWC MAXIMA
Commercial sink

Modell-Linie: MAXIMA | MAXS117-140
Catering sinks | Catering sinks



KWC-No.

2000057662
Drip section right

2000057700
Drip section left

drainer position

right

left

Commercial sink for inset or wall mounting, stainless steel, surface satin finished, material thickness 1 mm, deep drawn seamless welded bowl with dimensions, without overflow and 80 mm tap ledge, bowl left or right, 1 1/2" waste with two part overflow tube consisting of perforated stainless steel tube and plastic tube, drain

board with raffle and slanted to bowl, drain board with reinforced stainless steel bracket, 100 mm rear upstand, wall mounting brackets optional, drilling holes for wall mounting prelasered.

Drain board left

Technical Data

bowl - bowl height
bowl finish
bowl - depth
bowl - width
drainer position
drainer or storage
drainer / storage board quanti
material
material code
material thickness
noise prevention
overall depth
overall height
overall width
rear upstand
surface finish
tap ledge
type of mounting
waste hole position
waste hole projection
waste kit included
waste size

300 mm
satin finished
400 mm
500 mm
left
drainer
yes
stainless steel
1.4301 Chrome Nickel steel V2A
1 mm
yes
600 mm
432 mm
1,400 mm
yes
satin finished
yes
mounted on product
left back corner
221 mm
yes
DN 40

Optional Accessories



KWC MAXIMA
Commercial sink

Modell-Linie: **MAXIMA** | **MAXS117-140**
Catering sinks | Catering sinks



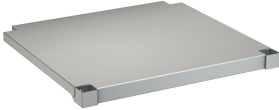
MAXIMA Bracket

2000057092
MAXB600



MAXIMA Frame for Maxima

2000057106
MAXF140-60



MAXIMA Shelf for Maxima

2000057756
MAXT140-60