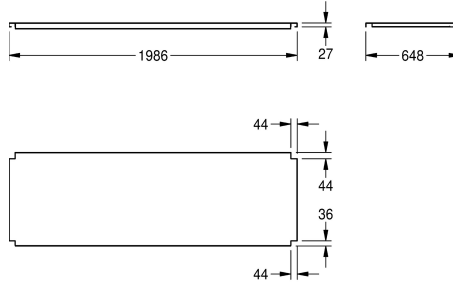
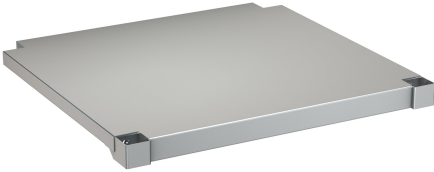


KWC MAXIMA Shelf for Maxima

Modell-Linie: MAXIMA | MAXT200-70
Catering sinks | Complementary parts catering



| KWC-No. | overall depth | overall width |
|---|---------------|---------------|
| 2000057716 Shelf for frame, made of chromium nickel steel | 548 mm | 1,186 mm |
| 2000057755 Shelf for frame, made of chromium nickel steel | 648 mm | 1,186 mm |
| 2000057756 Shelf for frame, made of chromium nickel steel | 548 mm | 1,386 mm |
| 2000057757 Shelf for frame, made of chromium nickel steel | 648 mm | 1,386 mm |
| 2000057758 Shelf for frame, made of chromium nickel steel | 548 mm | 1,586 mm |
| 2000057759 Shelf for frame, made of chromium nickel steel | 548 mm | 1,986 mm |
| 2000057760 Shelf for frame, made of chromium nickel steel | 648 mm | 1,986 mm |
| 2000057761 Shelf for frame, made of chromium nickel steel | 548 mm | 2,586 mm |
| 2000057763 Shelf for frame, made of chromium nickel steel | 548 mm | 586 mm |
| 2000100002 Shelf for frame, made of chromium nickel steel | 648 mm | 686 mm |
| 2000100003 Shelf for frame, made of chromium nickel steel | 548 mm | 686 mm |
| 2000100004 Shelf for frame, made of chromium nickel steel | 648 mm | 2,586 mm |

shelve for KWC commercial sinks with 600 or 700 mm depth, stainless steel, surface satin finished, material thickness 1.2 mm, inclusive shelve holder.

For MAXL sinks (700 mm deep, 2000 mm wide)

Technical Data

| | |
|--------------------|--------------------------------|
| material | stainless steel |
| material code | 1.4301 Chrome Nickel steel V2A |
| material thickness | 1.2 mm |
| overall depth | 648 mm |
| overall height | 41 mm |
| overall width | 1,986 mm |
| surface finish | satin finished |
| type of fixing | screw |
| type of mounting | mounted on product |