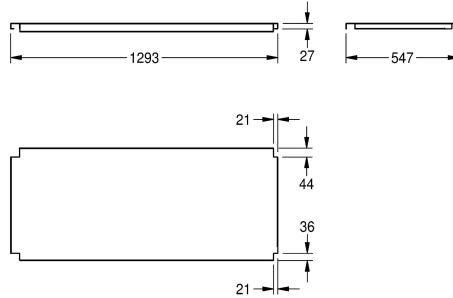


## KWC MAXIMA Shelf for Maxima

Modell-Linie: MAXIMA | MAXT260-60  
Catering sinks | Complementary parts catering



KWC-No.	overall depth	overall width
<b>2000057716</b> Shelf for frame, made of chromium nickel steel	548 mm	1,186 mm
<b>2000057755</b> Shelf for frame, made of chromium nickel steel	648 mm	1,186 mm
<b>2000057756</b> Shelf for frame, made of chromium nickel steel	548 mm	1,386 mm
<b>2000057757</b> Shelf for frame, made of chromium nickel steel	648 mm	1,386 mm
<b>2000057758</b> Shelf for frame, made of chromium nickel steel	548 mm	1,586 mm
<b>2000057759</b> Shelf for frame, made of chromium nickel steel	548 mm	1,986 mm
<b>2000057760</b> Shelf for frame, made of chromium nickel steel	648 mm	1,986 mm
<b>2000057761</b> Shelf for frame, made of chromium nickel steel	548 mm	2,586 mm
<b>2000057763</b> Shelf for frame, made of chromium nickel steel	548 mm	586 mm
<b>2000100002</b> Shelf for frame, made of chromium nickel steel	648 mm	686 mm
<b>2000100003</b> Shelf for frame, made of chromium nickel steel	548 mm	686 mm
<b>2000100004</b> Shelf for frame, made of chromium nickel steel	648 mm	2,586 mm

shelve for KWC commercial sinks with 600 or 700 mm depth, stainless steel, surface satin finished, material thickness 1.2 mm, inclusive shelve holder.

For MAXS sinks (600 mm deep, 2600 mm wide)

### Technical Data

material	stainless steel
material code	1.4301 Chrome Nickel steel V2A
material thickness	1.2 mm
overall depth	548 mm
overall height	41 mm
overall width	2,586 mm
surface finish	satin finished
type of fixing	screw
type of mounting	mounted on product