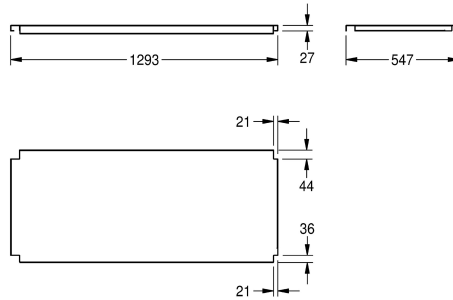
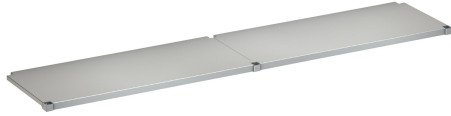


KWC MAXIMA Shelf for Maxima

Modell-Linie: MAXIMA | MAXT260-60
Catering sinks | Complementary parts catering



KWC-No.	overall depth	overall width
2000057716 Shelf for frame, made of chromium nickel steel	548 mm	1,186 mm
2000057755 Shelf for frame, made of chromium nickel steel	648 mm	1,186 mm
2000057756 Shelf for frame, made of chromium nickel steel	548 mm	1,386 mm
2000057757 Shelf for frame, made of chromium nickel steel	648 mm	1,386 mm
2000057758 Shelf for frame, made of chromium nickel steel	548 mm	1,586 mm
2000057759 Shelf for frame, made of chromium nickel steel	548 mm	1,986 mm
2000057760 Shelf for frame, made of chromium nickel steel	648 mm	1,986 mm
2000057761 Shelf for frame, made of chromium nickel steel	548 mm	2,586 mm
2000057763 Shelf for frame, made of chromium nickel steel	548 mm	586 mm
2000100002 Shelf for frame, made of chromium nickel steel	648 mm	686 mm
2000100003 Shelf for frame, made of chromium nickel steel	548 mm	686 mm
2000100004 Shelf for frame, made of chromium nickel steel	648 mm	2,586 mm

shelve for KWC commercial sinks with 600 or 700 mm depth, stainless steel, surface satin finished, material thickness 1.2 mm, inclusive shelve holder.

For MAXS sinks (600 mm deep, 2600 mm wide)

Technical Data

material	stainless steel
material code	1.4301 Chrome Nickel steel V2A
material thickness	1.2 mm
overall depth	548 mm
overall height	41 mm
overall width	2,586 mm
surface finish	satin finished
type of fixing	screw
type of mounting	mounted on product