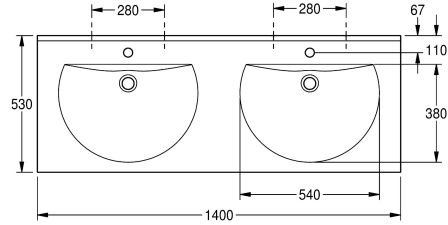
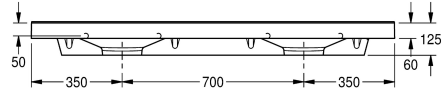
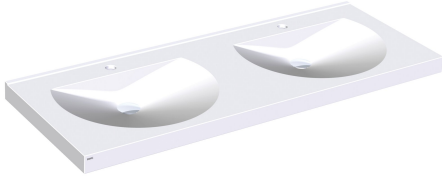


KWC RONDA Double washbasin

Modell-Linie: **RONDA | ANMW221**
Washbasins & Washtroughs | Wash basins



KWC-No.

2000090007

With 35 mm diameter tap holes

2000090006

Without tap holes

number of tap holes

2

RONDA double washbasin made of MIRANIT resin-bonded mineral material with smooth, pore-free surface (temperature-resistant up to 80 °C). Colour Alpine white. With two seamless round bowls, flattened out at the rear, without overflow. Mounting on washbasin back panel. Rear contoured edge. Three-sided apron 60 mm (H).

With tap holes 35 mm (D). Mounting material included.

Dimensions 1400 x 125 x 530 mm (W x H x D)
Bowl dimensions 540 x 90 x 380 mm (W x H x D)

Technical Data

bowl position

center

bowl - bowl height

90 mm

bowl - depth

380 mm

bowl shape

circle with straight sides

bowl - width

540 mm

colour

alpinewhite

distance between bowls

700 mm

material

mineral material

material code

Miranit

overall depth

530 mm

overall height

125 mm

overall width

1,400 mm

overflow

no

rear upstand

yes

siphon included

no

splash back

no

number of tap holes

2

tap hole diameter

35 mm

tap hole position

middle

tap ledge

yes

type of mounting

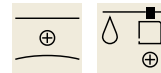
wall mounting

waste hole position

centre back

waste hole projection

185 mm



KWC RONDA Double washbasin

Modell-Linie: RONDA | ANMW221
Washbasins & Washtroughs | Wash basins

waste kit included

no

waste size

DN 32

Optional Accessories



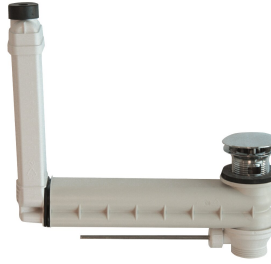
Strainer waste

2000100854
ZANMW901



Dome waste valve

2000100861
ZANMW900



Drain and overflow set

2000100932
ZANMW902



Trap

2000057417
XINX140