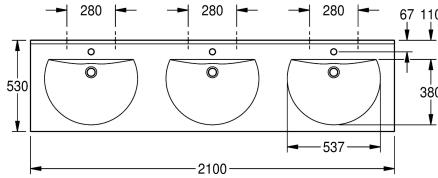
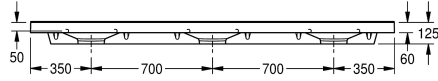
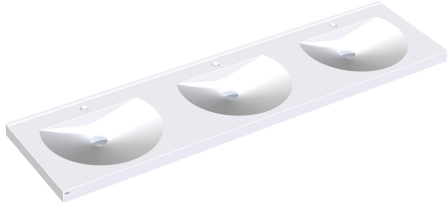


KWC RONDA Triple washbasin

Modell-Linie: **RONDA | ANMW231**
Washbasins & Washtroughs | Wash basins



KWC-No.

2000090009

With 35 mm diameter tap holes

2000090008

Without tap holes

number of tap holes

3

RONDA triple washbasin made of MIRANIT resin-bonded mineral material with smooth, pore-free surface (temperature-resistant up to 80 °C). Colour Alpine white. With three seamless round bowls, flattened out at the rear, without overflow. Mounting on washbasin back panel. Rear contoured edge. Three-sided apron 60 mm (H).

With tap holes 35 mm (D). Mounting material included.

Dimensions 2100 x 125 x 530 mm (W x H x D)
Bowl dimensions 540 x 90 x 380 mm (W x H x D)

Technical Data

bowl position	center
bowl - bowl height	90 mm
bowl - depth	380 mm
bowl shape	circle with straight sides
bowl - width	540 mm
colour	alpinewhite
distance between bowls	700 mm
material	mineral material
material code	Miranit
overall depth	530 mm
overall height	125 mm
overall width	2,100 mm
overflow	no
rear upstand	yes
siphon included	no
splash back	no
number of tap holes	3
tap hole diameter	35 mm
tap hole position	middle
tap ledge	yes
type of mounting	wall mounting
waste hole position	centre back
waste hole projection	185 mm

bowl position	center
bowl - bowl height	90 mm
bowl - depth	380 mm
bowl shape	circle with straight sides
bowl - width	540 mm
colour	alpinewhite
distance between bowls	700 mm
material	mineral material
material code	Miranit
overall depth	530 mm
overall height	125 mm
overall width	2,100 mm
overflow	no
rear upstand	yes
siphon included	no
splash back	no
number of tap holes	3
tap hole diameter	35 mm
tap hole position	middle
tap ledge	yes
type of mounting	wall mounting
waste hole position	centre back
waste hole projection	185 mm



KWC RONDA Triple washbasin

Modell-Linie: **RONDA** | **ANMW231**
Washbasins & Washtroughs | Wash basins

waste kit included _____
waste size _____

no _____
DN 32 _____

Optional Accessories



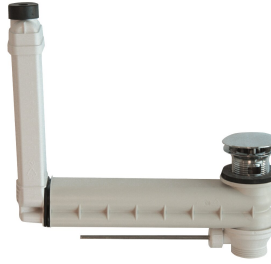
Strainer waste

2000100854
ZANMW901



Dome waste valve

2000100861
ZANMW900



Drain and overflow set

2000100932
ZANMW902



Trap

2000057417
XINX140