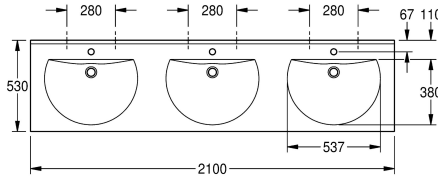
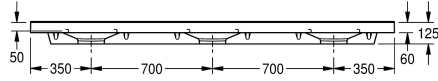


KWC RONDA Triple washbasin

Modell-Linie: **RONDA | ANMW231**
Washbasins & Washtroughs | Wash basins



KWC-No.

2000090009

With 35 mm diameter tap holes

2000090008

Without tap holes

number of tap holes

3

RONDA triple washbasin made of MIRANIT resin-bonded mineral material with smooth, pore-free surface (temperature-resistant up to 80 °C). Colour Alpine white. With three seamless round bowls, flattened out at the rear, without overflow. Mounting on washbasin back panel. Rear contoured edge. Three-sided apron 60 mm (H).

With tap holes 35 mm (D). Mounting material included.

Dimensions 2100 x 125 x 530 mm (W x H x D)
Bowl dimensions 540 x 90 x 380 mm (W x H x D)

Technical Data

| |
|------------------------|
| bowl position |
| bowl - bowl height |
| bowl - depth |
| bowl shape |
| bowl - width |
| colour |
| distance between bowls |
| material |
| material code |
| overall depth |
| overall height |
| overall width |
| overflow |
| rear upstand |
| siphon included |
| splash back |
| number of tap holes |
| tap hole diameter |
| tap hole position |
| tap ledge |
| type of mounting |
| waste hole position |
| waste hole projection |

| |
|----------------------------|
| center |
| 90 mm |
| 380 mm |
| circle with straight sides |
| 540 mm |
| alpinewhite |
| 700 mm |
| mineral material |
| Miranit |
| 530 mm |
| 125 mm |
| 2,100 mm |
| no |
| yes |
| no |
| no |
| 3 |
| 35 mm |
| middle |
| yes |
| wall mounting |
| centre back |
| 185 mm |



KWC RONDA Triple washbasin

Modell-Linie: **RONDA** | **ANMW231**
Washbasins & Washtroughs | Wash basins

waste kit included

no

waste size

DN 32

Optional Accessories



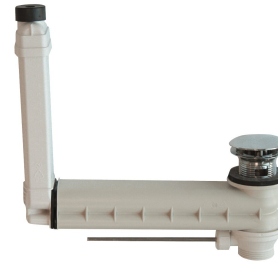
Strainer waste

2000100854
ZANMW901



Dome waste valve

2000100861
ZANMW900



Drain and overflow set

2000100932
ZANMW902



Trap

2000057417
XINX140