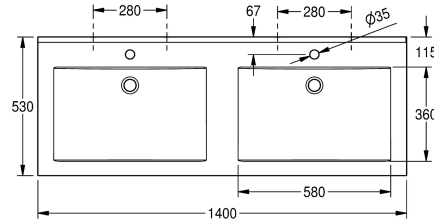
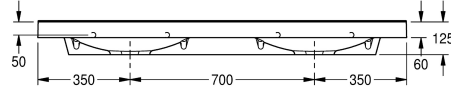
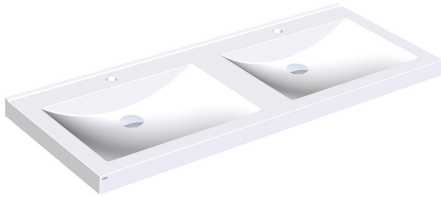


KWC QUADRO Double washbasin

Modell-Linie: **QUADRO | ANMW421**
Washbasins & Washtroughs | Wash basins



KWC-No.

2000090013

With 35 mm diameter tap holes

2000090012

Without tap holes

number of tap holes

2

QUADRO double washbasin made of MIRANIT resin-bonded mineral material with smooth, pore-free surface (temperature resistant up to 80°C). Colour Alpine white. With two seamless, rectangular bowls, without overflow. Mounting on washbasin back panel. Rear contoured edge. Three-sided apron 60 mm (H). With

tap holes 35 mm (D). Mounting material included.

Dimensions 1400 x 125 x 530 mm (W x H x D)
Bowl dimensions 580 x 90 x 360 mm (W x H x D)

Technical Data

bowl position
bowl - bowl height
bowl - depth
bowl shape
bowl - width
colour
distance between bowls
material
material code
overall depth
overall height
overall width
overflow
rear upstand
siphon included
splash back
number of tap holes
tap hole diameter
tap hole position
tap ledge
type of mounting
waste hole position
waste hole projection

center
90 mm
360 mm
rectangle
580 mm
alpinewhite
700 mm
mineral material
Miranit
530 mm
125 mm
1,400 mm
no
yes
no
no
2
35 mm
middle
yes
wall mounting
centre back
185 mm



KWC QUADRO Double washbasin

Modell-Linie: QUADRO | ANMW421
Washbasins & Washtroughs | Wash basins

waste kit included _____
waste size _____

no _____
DN 32 _____

Optional Accessories



Strainer waste

2000100854
ZANMW901



Dome waste valve

2000100861
ZANMW900



Drain and overflow set

2000100932
ZANMW902



Trap

2000057417
XINX140