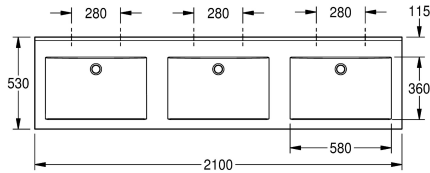
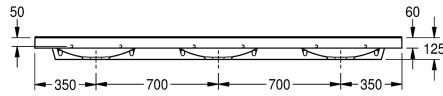
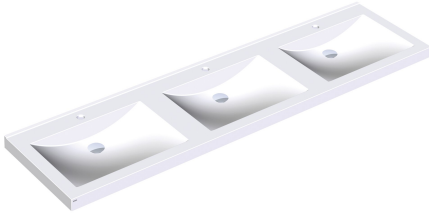


## KWC QUADRO Triple washbasin

Modell-Linie: **QUADRO | ANMW430**  
Washbasins & Washtroughs | Wash basins



### KWC-No.

**2000090015**

With 35 mm diameter tap holes

**2000090014**

Without tap holes

### number of tap holes

3

QUADRO triple washbasin made of MIRANIT resin-bonded mineral material with smooth, pore-free surface (temperature resistant up to 80 °C). Colour Alpine white. With three seamless, rectangular bowls, without overflow. Mounting on washbasin back panel. Rear contoured edge. Three-sided apron 60 mm (H). Without tap holes.

Mounting material included.

Dimensions 2100 x 60 x 530 mm (W x H x D)  
Bowl dimensions 580 x 90 x 360 mm (W x H x D)

### Technical Data

bowl position
bowl - bowl height
bowl - depth
bowl shape
bowl - width
colour
material
material code
overall depth
overall height
overall width
overflow
rear upstand
siphon included
splash back
tap ledge
type of mounting
waste hole position
waste hole projection
waste kit included
waste size

Center
90 mm
360 mm
rectangle
580 mm
alpinewhite
mineral material
Miranit
530 mm
125 mm
2,100 mm
no
yes
no
no
yes
wall mounting
centre back
185 mm
no
DN 32

### Optional Accessories

## KWC QUADRO Triple washbasin

Modell-Linie: QUADRO | ANMW430  
Washbasins & Washtroughs | Wash basins



**Strainer waste**

**2000100854**  
ZANMW901



**Dome waste valve**

**2000100861**  
ZANMW900



**Drain and overflow set**

**2000100932**  
ZANMW902



**Trap**

**2000057417**  
XINX140