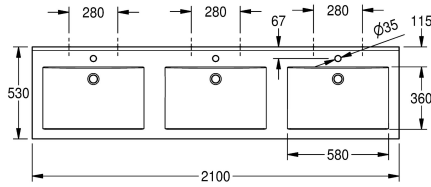
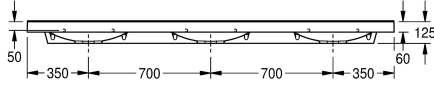
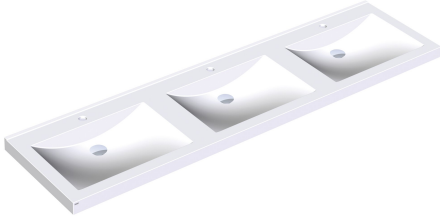


## KWC QUADRO Triple washbasin

Modell-Linie: **QUADRO | ANMW431**  
Washbasins & Washtroughs | Wash basins



### KWC-No.

**2000090015**

With 35 mm diameter tap holes

**2000090014**

Without tap holes

### number of tap holes

3

QUADRO triple washbasin made of MIRANIT resin-bonded mineral material with smooth, pore-free surface (temperature resistant up to 80 °C). Colour Alpine white. With three seamless, rectangular bowls, without overflow. Mounting on washbasin back panel. Rear contoured edge. Three-sided apron 60 mm (H). With tap holes.

Mounting material included.

Dimensions 2100 x 125 x 530 mm (W x H x D)  
Bowl dimensions 580 x 90 x 360 mm (W x H x D)

### Technical Data

bowl position	Center
bowl - bowl height	90 mm
bowl - depth	360 mm
bowl shape	rectangle
bowl - width	580 mm
colour	alpinewhite
distance between bowls	700 mm
material	mineral material
material code	Miranit
overall depth	530 mm
overall height	125 mm
overall width	2,100 mm
overflow	no
rear upstand	yes
siphon included	no
splash back	no
number of tap holes	3
tap hole diameter	35 mm
tap hole position	middle
tap ledge	yes
type of mounting	wall mounting
waste hole position	centre back
waste hole projection	185 mm



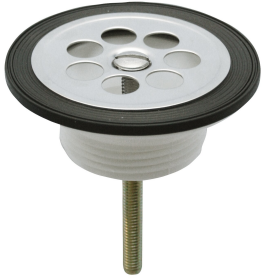
## KWC QUADRO Triple washbasin

Modell-Linie: **QUADRO | ANMW431**  
Washbasins & Washtroughs | Wash basins

waste kit included \_\_\_\_\_  
waste size \_\_\_\_\_

no \_\_\_\_\_  
DN 32 \_\_\_\_\_

### Optional Accessories



**Strainer waste**

**2000100854**  
ZANMW901



**Dome waste valve**

**2000100861**  
ZANMW900



**Drain and overflow set**

**2000100932**  
ZANMW902



**Trap**

**2000057417**  
XINX140