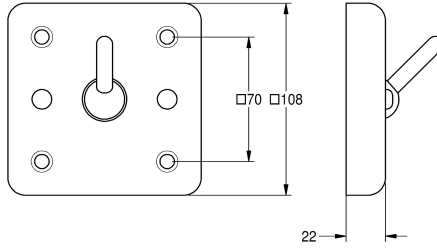


## KWC HEAVY-DUTY Clothes hook

Modell-Linie: HEAVYDUTY | HDTX692  
Accessories | Hooks



### KWC-No.

**2000090046**

Dimensions 108 x 108 x 52 mm (W x H x D)

**2000090047**

Version for installation from the rear, with threaded pins for vandalism-resistant installation via utility room

### type of mounting

wall mounting

bolt mounting

Coat hook for on-wall installation, stainless steel, material thickness 2 mm, visible surface satin finished. Safety hook tilts downwards when overloaded (5kg), projection 30 mm from wall plate. Mounting from

the front with screws. M6S plastic dowels to be provided by the builder.

Dimensions 108 x 108 x 52 mm (W x H x D)

### Technical Data

number of hooks

1

material

stainless steel

material code

1.4301 Chrome Nickel steel V2A

material thickness

2 mm

overall depth

52 mm

overall height

108 mm

overall width

108 mm

special functionality

anti ligature feature

surface finish

satin finished

type of fixing

screw

type of mounting

wall mounting

