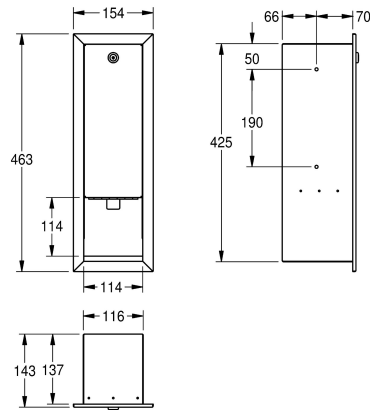


KWC RODAN

Soap dispenser for recessed mounting

Modell-Linie: RODAN | RODX618E

Accessories | Soap dispensers



KWC-No.

2000090066

Dimensions 154 x 463 x 143 mm (W x H x D)

Soap dispenser for recessed mounting, stainless steel, surface satin finished, material thickness 0.8 mm, folded front cover, cylinder lock with KWC standard key, suitable for liquid soaps and lotions, 0.8 liter soap tank, lever to pull, includes stainless steel screws and

dowels.

Dimensions 154 x 463 x 143 mm (W x H x D)

Technical Data

| | |
|------------------------|--------------------------------|
| filling quantity | 800 |
| filling quantity uom | ml |
| lock | key-lock |
| material | stainless steel |
| material code | 1.4301 Chrome Nickel steel V2A |
| material thickness | 0.8 mm |
| overall depth | 143 mm |
| overall height | 463 mm |
| overall width | 154 mm |
| surface finish | satin finished |
| type of consumable | liquid soap |
| type of fixing | screw |
| type of mounting | recessed mounting |
| type of operation | manual operation |
| type of soap container | integrated refillable tank |

Consumables





KWC RODAN

Soap dispenser for recessed mounting

Modell-Linie: RODAN | RODX618E
Accessories | Soap dispensers

Liquid soap

2030058103
SO1LP

Liquid soap

2000057168
SO10L
