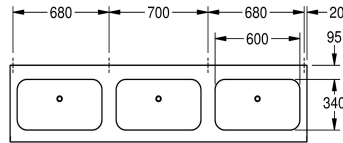
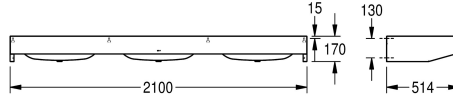
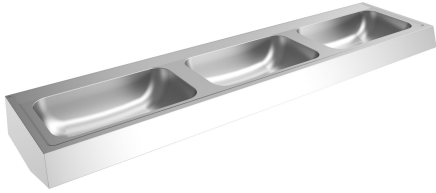


KWC ANIMA Multiple washbasin, 3 washbasins

Modell-Linie: ANIMA | CM2100
Washbasins & Washtroughs | Wash basins



KWC-No.

2000100037
Width 2100 mm, with 3 washbasins

2000100038
Width 2800 mm, with 4 washbasins

overall width

2,100 mm

2,800 mm

Wash basin, stainless steel, surface satin finished, material thickness 1.0 mm, with tap ledge 95 mm, without tap hole, waste G 1 1/2 B, includes screws and dowels.

3 basins
Dimensions 2100 x 170 x 514 mm (W x H x D)
Bowl Dimensions 600 x 130 x 340 mm (W x H x D)

Technical Data

type of basin
bowl position
bowl - bowl height
bowl finish
bowl - depth
bowl shape
bowl - width
colour
distance between bowls
material
material code
material thickness
overall depth
overall height
overall width
overflow
rear upstand
siphon diameter
siphon included
spillway
splash back
surface finish
tap ledge
type of mounting

Wash basin
center
130 mm
satin finished
340 mm
rounded rectangle
600 mm
No colour
700 mm
stainless steel
1.4301 Chrome Nickel steel V2A
1 mm
514 mm
170 mm
2,100 mm
no
no
DN 40
no
no
no
satin finished
yes
wall mounting





KWC ANIMA

Multiple washbasin, 3 washbasins

Modell-Linie: ANIMA | CM2100

Washbasins & Washtroughs | Wash basins

type of waste kit	flat perforated waste
waste hole position	centre back
waste hole projection	225 mm
waste kit included	yes
waste size	DN 40
waste sleeve included	no