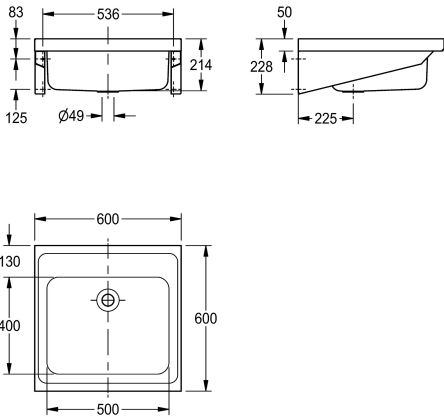


KWC  
Hospital sink

Modell-Linie: TUBS-BASINS | G22002N  
Utility sinks | Multi purpose sink



KWC-No.

2000100261

A single bowl sink manufactured from 1.2 mm thick, grade 1.4301 (304) stainless steel, satin polish finish. The sink top is turned down on all four edges and incorporates a wet area recess. The bowl is prepared for a 38 mm waste outlet.

NOTE: It is not possible to fit an overflow. The sink top can either be mounted on wall brackets or front leg supports -see extras listed below. Single bowl, no tapholes

Dimensions 600 x 228 x 600 mm (W x H x D)

Technical Data

bowl - bowl height
bowl finish
bowl - depth
bowl - width
drainer or storage
material
material code
material thickness
overall depth
overall height
overall width
surface finish
tap ledge
type of mounting
waste hole position
waste size

200 mm
satin finished
500 mm
400 mm
no
stainless steel
1.4301 Chrome Nickel steel V2A
1.2 mm
600 mm
218 mm
600 mm
satin finished
no
wall mounting
centre back
DN 32