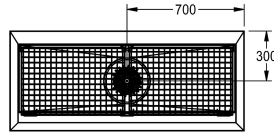
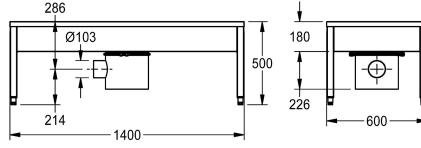


KWC SIRIUS Shoe- and boot-cleaning unit

Modell-Linie: SIRIUS | SIRX721C
Utility sinks | Shoe and boot cleaning units



KWC-No.

2000100354

Dimensions 700 x 500 x 600 mm (W x H x D), with 1 cleaning place

2000100355

with 2 cleaning places, dimensions 1400 x 500 x 600 mm (W x H x D)

2000100356

with 3 cleaning places, dimensions 2100 x 500 x 600 mm (W x H x D)

2000101549

with 4 cleaning places, dimensions 2800 x 500 x 600 mm (W x H x D)

overall width

700 mm

1,400 mm

2,100 mm

2,800 mm

Shoe- and boot-cleaning-unit for wall mounting, stainless steel, surface satin finished, material thickness 1.2 mm, with 40 x 40 mm feet, waste turnable, inlet diameter 1/2".

2 washing places, include sludge trap fitting, hand brushes with lever activation and sump bucket with siphon.

Dimensions 1400 x 500 x 600 mm (W x H x D)

Technical Data

bowl position
bowl construction
bowl - bowl height
bowl - depth
bowl - width
brushes
number of brushes
drainer or storage
grid
grid material
inlet size
material
material code
material code grid
material thickness
number of waste holes
outlet size
overall depth
overall height

center
square corner
180 mm
475 mm
1,300 mm
hand brushes
2
no
hinged
stainless steel
G 1/2 B
stainless steel
1.4301 Chrome Nickel steel V2A
1.4301 Chrome Nickel steel V2A
1.2 mm
1
DN 100
600 mm
500 mm

KWC SIRIUS

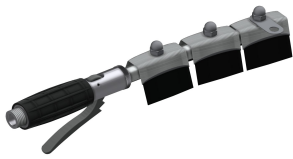
Shoe- and boot-cleaning unit

Modell-Linie: SIRIUS | SIRX721C

Utility sinks | Shoe and boot cleaning units

overall width	1,400 mm
overflow	no
sump	yes
sump basket	included
surface finish	satin finished
type of mounting	wall mounting
type of utility sink	cleaner sink
type of waste kit	flat perforated waste
upper edge of basin height	500 mm
number of wash places	2
waste hole position	centre
waste hole projection	300 mm
waste kit included	yes

Spare Parts



SIRIUS Hand brush

2000101473
ZSIRW003



Stainless steel care set

2000109019
ZWSP0024



Cleaning product CHROMOL

2000105091
ZWSP0023