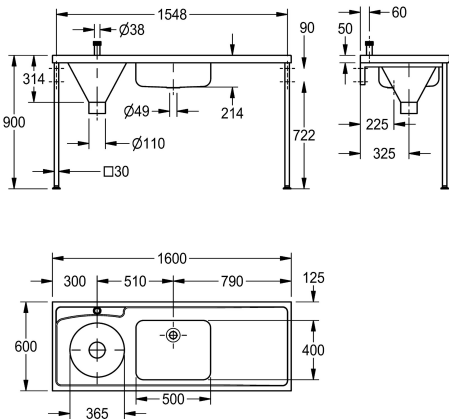


KWC
DUHS hospital disposal unit with washbasin and drainer

Modell-Linie: **TUBS-BASINS | G22027R**
Utility sinks | Multi purpose sink



KWC-No.
2000100406 Left version
2000100408 Right version

drainer position
left
right

A DUHS hospital disposal unit manufactured from 1.2 mm thick, grade 1.4301 (304) stainless steel with a satin polish finish. The top is turned down on all four edges and incorporates a wet area recess. Fitted with a 110 mm dia. outlet sluice hopper at one end which can accept a P or S trap, (available as an extra). A washing up bowl, without waste, is positioned next to the sluice hopper and is prepared for a 38 mm waste outlet. Flush grated wastes are available as an extra. Plastic cisterns with a 9 litre capacity, and stainless steel cistern in 6, 7 or 9 litre capacity can be fitted using a 13 mm HP brass valve, plastic float and CP metal flushing lever handles. The unit should only be fed from a cistern or tank water supply. The unit can be mounted on either stainless steel cantilever

brackets or front leg supports which give a working height of 900 mm and have adjustable feet that can be screwed to the floor for extra stability.

Manufactured in accordance with HTM 64 / HBN 00-10, Part C Standards
Right hand drainer
110 mm outlet
Top inlet for surface mounted cisterns
No tap holes
Dimensions 1600 x 600 x 300 mm (W x H x D)

Technical Data
bowl - bowl height
bowl finish
bowl - depth
bowl - width
drainer position
drainer or storage
material
material code
material thickness
minimum flushing capacity
outlet size
overall depth
overall height
overall width
overflow
surface finish
tap ledge
type of mounting
waste hole position
waste hole projection

200 mm
satin finished
400 mm
500 mm
right
drainer
stainless steel
1.4301 Chrome Nickel steel V2A
1.2 mm
6 Liter
DN 100
600 mm
300 mm
1.600 mm
no
satin finished
no
wall and floor mounting
centre back
225 mm



KWC

DUHS hospital disposal unit with washbasin and drainer

Modell-Linie: TUBS-BASINS | G22027R
Utility sinks | Multi purpose sink

waste size

DN 32

Optional Accessories



Removable Grating

2030016049
G26542N