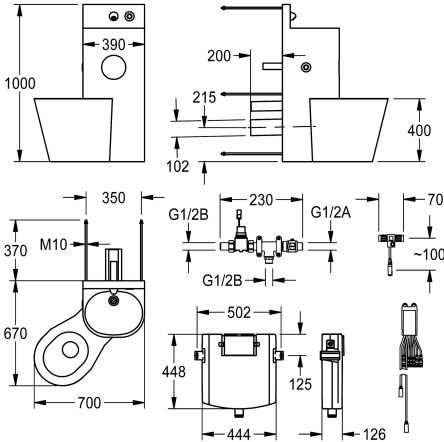


KWC HEAVY-DUTY
WC washbasin combination

Modell-Linie: HEAVYDUTY | HDTX806L
Heavy Duty | Prison units



KWC-No.

2000100956

Version with WC pan angled 45° to the left

2000100957

Version with centrally arranged WC pan Dimensions 390 x 1000 x 780 mm (W x H x D)

2000100958

Version with WC pan angled 45° to the right Dimensions 700 x 1000 x 670 mm (W x H x D)

WC position

left

middle

right

Chromium nickel steel WC wash basin combination, satin finish surface for installing outside a utility room accessible from the back with remotely controlled tap components for fitting in the utility room, fixing from the back with threaded pins. Mounting stand, material thickness 2 mm with elevated rear wall including wall outlet and piezo button with start/stop function with seamless welded VWC paper compartment and seamless moulded wash basin with trap, outlet DN 40. WC pan, material thickness 1.6 mm with full-length skirting, arranged on the left 45 degrees, bowl rim where nothing

can hide with piezo button for WC flushing, flushing certified pursuant to EN 997, horizontal outlet at the back DN 100. With solenoid to connect to premixed hot water or cold water. Condensation water-proof concealed cistern with single flush technology (9 or 6 litres) Supply voltage 24 V DC Including fixing material.

Overall dimensions 700 x 1000 x 670 (W x H x D)

Technical Data

body width	390 mm
front access panel	no
floor fixing joggle plate	no
inlet size	DN 15
material	stainless steel
material code	1.4301 Chrome Nickel steel V2A
material thickness body	2 mm
material thickness WC	1.5 mm
outlet size	DN 50 / DN 100
overall depth	669 mm
overall height	1,000 mm
overall width	699 mm
overflow	no
pipework material	stainless steel
self closing push buttons	electronical
toilet roll holder diameter	153 mm
shroud design	round shape
soap dish	no
spout length	83 mm

body width	390 mm
front access panel	no
floor fixing joggle plate	no
inlet size	DN 15
material	stainless steel
material code	1.4301 Chrome Nickel steel V2A
material thickness body	2 mm
material thickness WC	1.5 mm
outlet size	DN 50 / DN 100
overall depth	669 mm
overall height	1,000 mm
overall width	699 mm
overflow	no
pipework material	stainless steel
self closing push buttons	electronical
toilet roll holder diameter	153 mm
shroud design	round shape
soap dish	no
spout length	83 mm







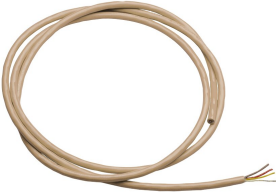
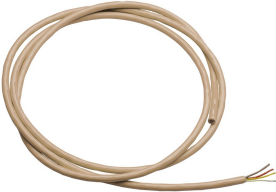
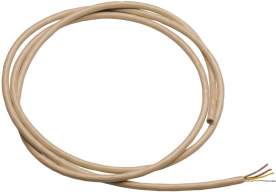
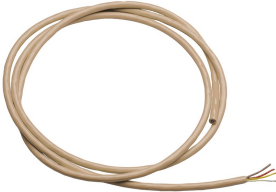


KWC HEAVY-DUTY
WC washbasin combination

Modell-Linie: HEAVYDUTY | HDTX806L
Heavy Duty | Prison units

surface finish	satin finished
tap with integrated bubbler	no
type of flushing fitting	WC flush valve
type of mounting	bolt mounting
type of toilet seat	no seat
type of WC	floor standing
upper edge of basin height	850 mm
upstand depth	20 mm
upstand height	150 mm
WC height	400 mm
WC position	left

Mandatory Accessories

			
ECC2 function controller	ECC2 function controller	Power supply unit	Power supply unit
2000108123 ZA3OP0011	2030016282 ZA3OP0022	2000100375 ZAQUA007	2000102691 ZAQUA094
			
System cable	System cable	System cable	System cable
2000100801 ZAQUA077	2000100852 ZAQUA078	2000104272 ZAQUA011	2000104274 ZAQUA012

Spare Parts



KWC HEAVY-DUTY
WC washbasin combination

Modell-Linie: **HEAVYDUTY** | HDTX806L
Heavy Duty | Prison units



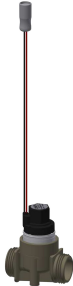
Wall outlet, DN 15

2000107291
ZTAPS0004



Electrical T junction

2000100853
ZAQUA075



Solenoid valve

2000101328
ZAQUA032



Stainless steel care set

2000109019
ZWSPLO024



Cleaning product **CHROMOL**

2000105091
ZWSPLO023