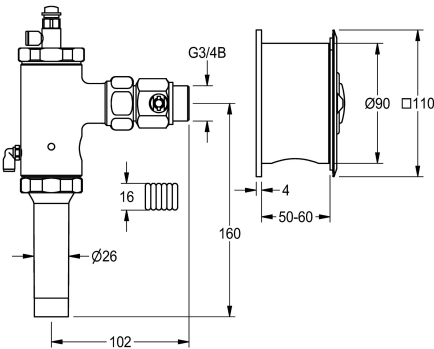




KWC AQUALINE
WC flushing valve

Modell-Linie: AQUALINE | AQRM553C
Flushing systems | Self closing wc flushing system



KWC-No.

2000103712

2000101061

Version without noise group I

sound insulation

I-

no

AQUALINE WC flush valve DN 20 with remote control, for vandal resistant applications, installation of flush valve outside the user room, remote

control in wall installation box with stainless steel cover plate and metal push button.

Technical Data

calculation flow rate cold wat
Cover plate height
functional principle
diameter nominal
material casing
material code casing
material fitting
maximum flow pressure
maximum flushing flow
maximum flush water volume
minimum flow pressure
minimum flushing flow
minimum flush water volume
protective shutdown
sound insulation
surface finish casing
surface finish fitting
type of flushing fitting
type of mounting
type of operation
water connection
Basic colour

1 l/s
110 mm
hydraulic self-closing
DN 20
stainless steel
1.4301 Chrome Nickel steel V2A
brass-look
4 bar
1.3 l/s
9 Liter
1.2 bar
1 l/s
6 Liter
no
no
satin finished
raw
WC flush valve
concealed
manual operation
threaded connection (external)
stainless steel-look

Spare Parts



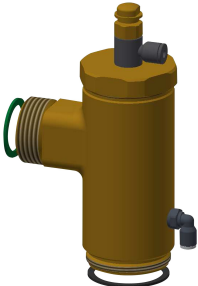
KWC AQUALINE
WC flushing valve

Modell-Linie: AQUALINE | AQRM553C
Flushing systems | Self closing wc flushing system



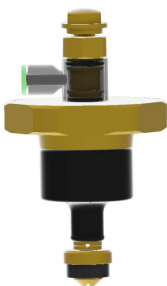
Remote operation valve

2000104780
EFLSY0027



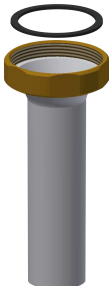
WC flush valve DN 20

2000104835
EAQLN0020



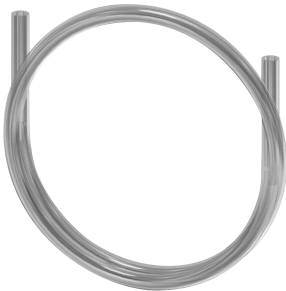
Head part

2000104389
EFLSY0005



Outlet screw connection

2000106164
EAQLN0018



Remote operation hose

2000104803
EAQLN0019