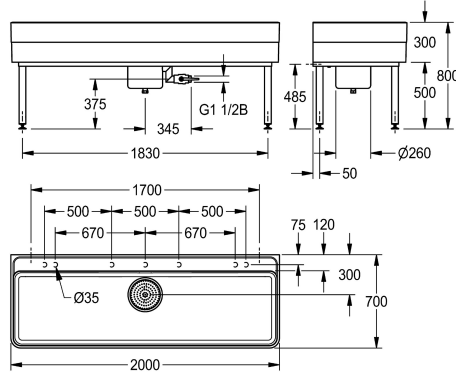


## KWC SIRIUS Workroom sink

Modell-Linie: SIRIUS | SIRW773  
Utility sinks | Multi purpose sink



### KWC-No.

**2000102722**

Dimensions 1100 x 300/800 x 700 mm (W x H x D)

**2000102723**

Length 2000 mm

### overall width

1,100 mm

2,000 mm

Workroom sink made of MIRANIT resin-bonded mineral material with pore-free smooth surface (temperature-resistant up to 80 °C). Basin with integrated tap landing, without tap hole, with marking for drilling holes on the underside of the tap landing. Large inner radii, bottom of basin with 2° slope. Alpine white colour. Drain with under-screwed waste unit including removable sludge bucket, DN 40 overflow at waste unit and DN 25 waste outlet spigot made of

stainless steel. Waste unit with DN 40 ball cock completely fitted with tubes. Waste unit rotatable by 90°. Welded substructure frame, powder-coated in basin colour, adjustable base feet. Mounting material included.

Dimensions 2000 x 300/800 x 700 mm (W x H x D)  
Bowl dimensions 1960 x 283 x 555 mm (W x H x D)

### Technical Data

bowl - bowl height	283 mm
bowl finish	high polished
bowl - depth	555 mm
bowl - width	1,960 mm
brushes	Without brushes
drainer or storage	no
grid	no
material	mineral material
material code	Miranit
number of waste holes	1
overall depth	700 mm
overall height	800 mm
overall width	2,000 mm
overflow	no
rear upstand	no
wash riffle	no
spillway	no
splash back	no
sump	yes
sump basket	included
surface finish	coated
tap ledge	yes



**KWC SIRIUS**  
Workroom sink

**Modell-Linie: SIRIUS | SIRW773**  
Utility sinks | Multi purpose sink

type of mounting	wall and floor mounting
type of utility sink	cleaner sink
upper edge of basin height	800 mm
waste hole position	centre back
waste hole projection	300 mm