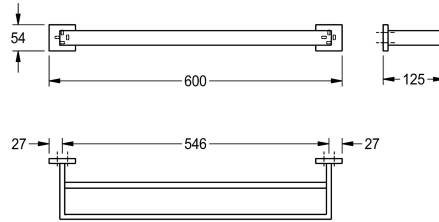
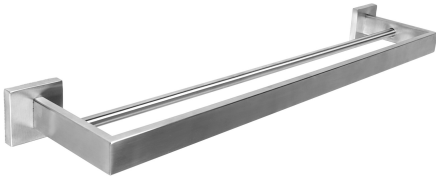


KWC CUBUS CUBUS Double towel rail for wall mounting

Modell-Linie: CUBUS | CUBX002
Accessoires Hotel & Residential | Towel & rob holder Hotel



KWC-No.

2000106347

Surface high polished Dimensions 600 x 54 x 125 mm (W x H x D)

2000106346

Surface satin finished

surface finish

high polished

satin finished

Double towel rail for wall mounting, 304 stainless steel, square covers with drilled hole on bottom for fixation, includes stainless steel screws and dowels.

Surface satin finished
Dimensions 600 x 54 x 125 mm (W x H x D)

Technical Data

material
material code
overall depth
overall height
overall width
surface finish
type of fixing
type of mounting

stainless steel
1.4301 Chrome Nickel steel V2A
125 mm
54 mm
600 mm
satin finished
screw
wall mounting