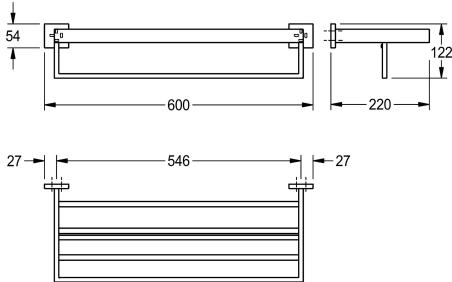
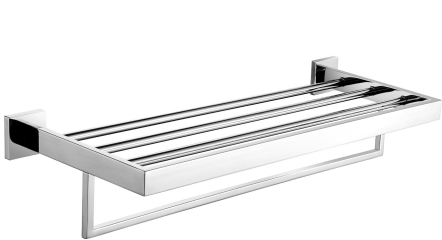




KWC CUBUS
Double towel rack

Modell-Linie: CUBUS | CUBX012HP
Accessoires Hotel & Residential | Towel & rob holder Hotel



KWC-No.

2000106361
Surface high polished Dimensions 600 x 54 x 220 mm (W x H x D)
2000106360
Surface satin finished

Double towel rack in combination of towel shelf and rail for wall mounting, 304 stainless steel, square covers with drilled hole on bottom for fixation, includes stainless steel screws and dowels.

surface finish

high polished
satin finished

Surface high polished
Dimensions 600 x 122 x 220 mm (W x H x D)

Technical Data

material
material code
overall depth
overall height
overall width
surface finish
type of fixing
type of mounting

stainless steel
1.4301 Chrome Nickel steel V2A
220 mm
122 mm
600 mm
high polished
screw
wall mounting