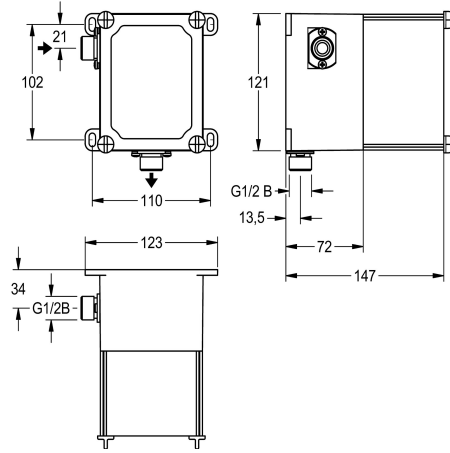


## KWC

### Basic installation kit for in-wall urinal flush valves

Modell-Linie: **PROTRONIC | AQLN0006**

Flushing systems | Basic installation kits for flushing system



#### KWC-No.

**2000107414**

Basic installation kit

Basic installation kit for manual or touch-free urinal flush valve for in-wall installation. Plastic box for in-wall installation, 95 x 120 mm, water path with integrated lockable water volume control and

holder for self-closing solenoid valve cartridge and strainer, supplied with plug for flushing and leak test.

#### Technical Data

application
Built-in fitting model
diameter nominal
material
minimum wall thickness
type of mixing
outlet size
type
type of mounting

urinal flushing
Built-in section
DN 15
synthetic
72 mm
no
G 1/2 B
for built-in with box
in-wall installation with box