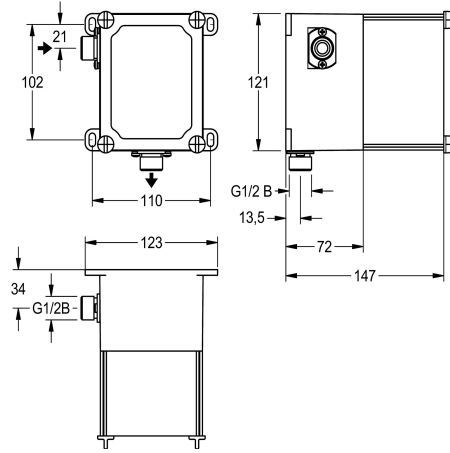


KWC

Basic installation kit for in-wall urinal flush valves

Modell-Linie: **PROTRONIC | AQLN006**

Flushing systems | Basic installation kits for flushing system



KWC-No.

2000107414

Basic installation kit

Basic installation kit for manual or touch-free urinal flush valve for in-wall installation. Plastic box for in-wall installation, 95 x 120 mm, water path with integrated lockable water volume control and

holder for self-closing solenoid valve cartridge and strainer, supplied with plug for flushing and leak test.

Technical Data

application	urinal flushing
Built-in fitting model	Built-in section
diameter nominal	DN 15
material	synthetic
minimum wall thickness	72 mm
type of mixing	no
outlet size	G 1/2 B
type	for built-in with box
type of mounting	in-wall installation with box

urinal flushing
Built-in section
DN 15
synthetic
72 mm
no
G 1/2 B
for built-in with box
in-wall installation with box