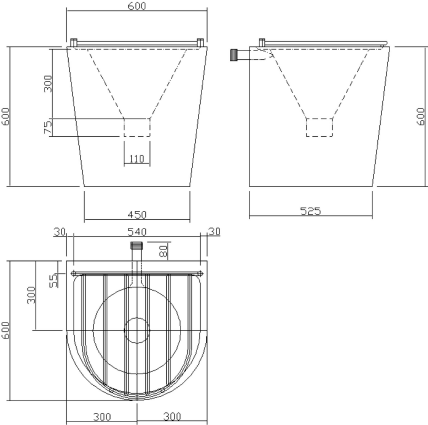


KWC
G22020N Floor standing DUG disposal unit

Modell-Linie: SIRIUS | G22020N
Utility sinks | Cleaners sinks



KWC-No.

2030013311

Utility sink made of chromium nickel steel, 1.2-mm material thickness, satin-finished surface, with attached grid made of chromium nickel steel, suitable for wall and floor installation.

Floor standing DUG disposal unit, manufactured from 1.2 mm thick, grade 1.4301 (304) stainless steel with a satin polish finish. Incorporating a sluice hopper which is suitable for duct mounted services. The hopper has a 110 mm diameter outlet which can accept a P trap (available as an extra). A duct mounted 9 litre plastic cistern with plastic downpipe, plastic float and metal flushing lever handles is available. The unit should only be fed from

a cistern or tank water supply. The unit is fixed to the floor and the wall via the service duct.

Back inlet for a duct mounted cisterns
Sluice hopper size 375/110 x 300 mm (W x H x D)
Dimensions 600 x 600 x 600 mm (W x H x D)

Technical Data

| |
|--------------------|
| bowl finish |
| grid |
| grid material |
| material |
| material code |
| material code grid |
| material thickness |
| overall depth |
| overall height |
| overall width |
| splash back |
| surface finish |
| tap ledge |
| type of mounting |

| |
|--------------------------------|
| satin finished |
| fixed |
| stainless steel |
| stainless steel |
| 1.4301 Chrome Nickel steel V2A |
| 1.4301 Chrome Nickel steel V2A |
| 1.2 mm |
| 600 mm |
| 600 mm |
| 600 mm |
| no |
| satin finished |
| no |
| wall and floor mounting |