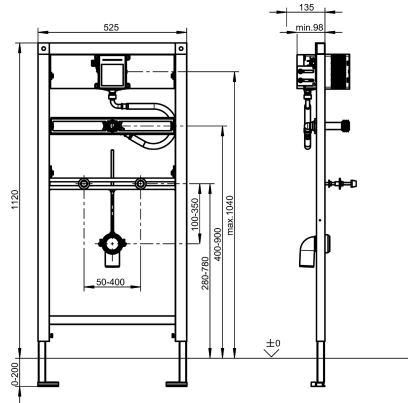
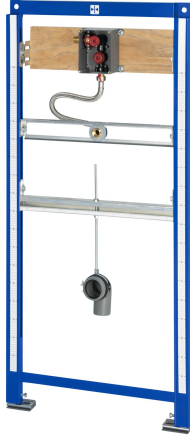


## KWC AQUAFIX

Installation frame with flush valve for in-wall installation for ceramic urinals

Modell-Linie: AQUAFIX | AQFX0001

Installation frames | Installation units urinals



### KWC-No.

**2030020123**

Installation frame for ceramic urinals, with flush valve for in-wall installation

AQUAFIX installation frame for ceramic urinals, with ready assembled basic installation kit for in-wall urinal flush valves, manually operated or touch-free, opto-electronically controlled. Self-supporting, powder-coated, steel frame construction, TÜV tested, for installation of single units in dry-wall lining, adjustable height

fixing as well as tap connection and outlet mount, sound-insulated wall duct with flush connector, universal outlet bend 50 mm, urinal fixing bolts, building protection and fixing materials.

Dimensions 525 x 1120 mm (W x H)

### Technical Data

application
barrier-free
Built-in fitting model
height adjustment
diameter nominal
material
minimum wall thickness
type of mixing
outlet size
overall depth
overall height
overall width
position of power connection
type
type of mounting

urinals
no
Built-in section
200 mm
DN 15
Steel
135 mm
no
DN 50
135 mm
1,120 mm
525 mm
from side
installation element
wall and floor mounting

### Mandatory Accessories

## KWC AQUAFIX

Installation frame with flush valve for in-wall installation for ceramic urinals

Modell-Linie: AQUAFIX | AQFX0001

Installation frames | Installation units urinals



### F5E electronic urinal flush valve for in-wall installation

---

**2030067743**  
F5EF3010

---

### Optional Accessories



### AQUAFIX wall bracket

---

**2000100867**  
ZCMPX140

---