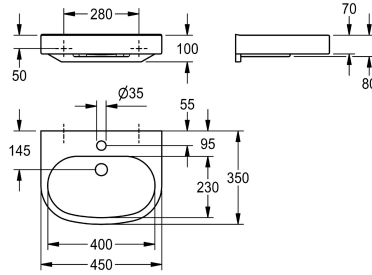


KWC VARIUScare Single washbasin barrier-free

Modell-Linie: VARIUSCARE | ANMW505
Washbasins & Washtroughs | Wash basins



| KWC-No. |
|---|
| 2030020958 Dimensions 650 x 120 x 550 mm (W x H x D) Recess dimensions 600 x 80 x 420 mm (W x H x D) |
| 2030020961 Dimensions 550 x 120 x 450 mm (W x H x D) Recess dimensions 500 x 80 x 325 mm (W x H x D) |
| 2030020963 Dimensions 450 x 100 x 350 mm (W x H x D) Recess dimensions 400 x 60 x 230 mm (W x H x D) |

| overall depth | overall width |
|---------------|---------------|
| 550 mm | 650 mm |
| 450 mm | 550 mm |
| 350 mm | 450 mm |

VARIUScare single washbasin made of MIRANIT resin-bonded mineral material. Colour Alpine white. Wheelchair accessible, with integrated gripping edge. Seamless moulded bowl, without overflow. With tap hole. Mounting on washbasin back panel. Rear

contoured edge. Mounting material included.

Dimensions 450 x 100 x 350 mm (W x H x D)
Bowl dimensions 400 x 60 x 230 mm (W x H x D)

| Technical Data | |
|---------------------|------------------|
| barrier-free | yes |
| type of basin | Wash basin |
| bowl position | Center |
| bowl - bowl height | 60 mm |
| bowl - depth | 230 mm |
| bowl - width | 400 mm |
| colour | alpinewhite |
| material | mineral material |
| material code | Miranit |
| overall depth | 350 mm |
| overall height | 100 mm |
| overall width | 450 mm |
| overflow | no |
| rear upstand | yes |
| siphon diameter | DN 32 |
| siphon included | no |
| splash back | no |
| number of tap holes | 1 |
| tap hole diameter | 35 mm |
| tap hole position | middle |
| tap ledge | yes |

| |
|------------------|
| yes |
| Wash basin |
| Center |
| 60 mm |
| 230 mm |
| 400 mm |
| alpinewhite |
| mineral material |
| Miranit |
| 350 mm |
| 100 mm |
| 450 mm |
| no |
| yes |
| DN 32 |
| no |
| no |
| 1 |
| 35 mm |
| middle |
| yes |

KWC VARIUScare Single washbasin barrier-free

Modell-Linie: VARIUSCARE | ANMW505
Washbasins & Washtroughs | Wash basins

| | |
|-----------------------|-------|
| type of mounting | _____ |
| waste hole position | _____ |
| waste sleeve included | _____ |
| Colour strip | _____ |

| | |
|---------------|-------|
| wall mounting | _____ |
| centre back | _____ |
| no | _____ |
| no | _____ |

Optional Accessories



Strainer waste

2000100854
ZANMW901



Dome waste valve

2000100861
ZANMW900