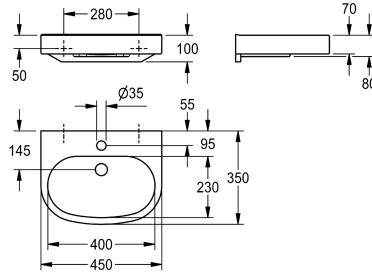


## KWC VARIUScare Single washbasin barrier-free

Modell-Linie: VARIUSCARE | ANMW505  
Washbasins & Washtroughs | Wash basins



KWC-No.
<b>2030020958</b> Dimensions 650 x 120 x 550 mm (W x H x D) Recess dimensions 600 x 80 x 420 mm (W x H x D)
<b>2030020961</b> Dimensions 550 x 120 x 450 mm (W x H x D) Recess dimensions 500 x 80 x 325 mm (W x H x D)
<b>2030020963</b> Dimensions 450 x 100 x 350 mm (W x H x D) Recess dimensions 400 x 60 x 230 mm (W x H x D)

overall depth	overall width
550 mm	650 mm
450 mm	550 mm
350 mm	450 mm

VARIUScare single washbasin made of MIRANIT resin-bonded mineral material. Colour Alpine white. Wheelchair accessible, with integrated gripping edge. Seamless moulded bowl, without overflow. With tap hole. Mounting on washbasin back panel. Rear

contoured edge. Mounting material included.

Dimensions 450 x 100 x 350 mm (W x H x D)  
Bowl dimensions 400 x 60 x 230 mm (W x H x D)

Technical Data	
barrier-free	yes
type of basin	Wash basin
bowl position	Center
bowl - bowl height	60 mm
bowl - depth	230 mm
bowl - width	400 mm
colour	alpinewhite
material	mineral material
material code	Miranit
overall depth	350 mm
overall height	100 mm
overall width	450 mm
overflow	no
rear upstand	yes
siphon diameter	DN 32
siphon included	no
splash back	no
number of tap holes	1
tap hole diameter	35 mm
tap hole position	middle
tap ledge	yes

yes
Wash basin
Center
60 mm
230 mm
400 mm
alpinewhite
mineral material
Miranit
350 mm
100 mm
450 mm
no
yes
DN 32
no
no
1
35 mm
middle
yes

## KWC VARIUScare Single washbasin barrier-free

Modell-Linie: VARIUSCARE | ANMW505  
Washbasins & Washtroughs | Wash basins

type of mounting	_____
waste hole position	_____
waste sleeve included	_____
Colour strip	_____

wall mounting	_____
centre back	_____
no	_____
no	_____

### Optional Accessories



**Strainer waste**

**2000100854**  
ZANMW901



**Dome waste valve**

**2000100861**  
ZANMW900