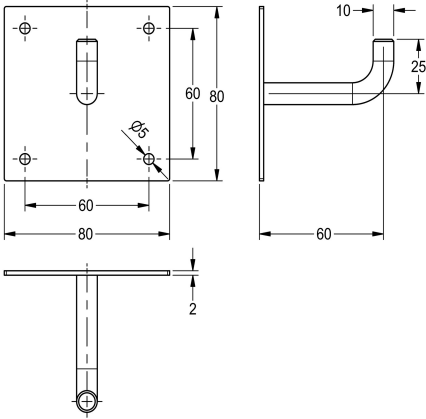




KWC HEAVY-DUTY  
Coat hook

Modell-Linie: HEAVYDUTY | HDTX691  
Accessories | Hooks



KWC-No.

2030022465

Coat hook for wall mounting, stainless steel, surface satin finished, material thickness 2 mm, mounting from front. For covering the mounting

plate with plaster after fixing to wall, incl. stainless steel screws and dowels.

Technical Data

number of hooks
material
material code
material thickness
overall depth
overall height
overall width
surface finish
type of fixing
type of mounting

1
stainless steel
1.4301 Chrome Nickel steel V2A
2 mm
65 mm
80 mm
80 mm
satin finished
screw
wall mounting

