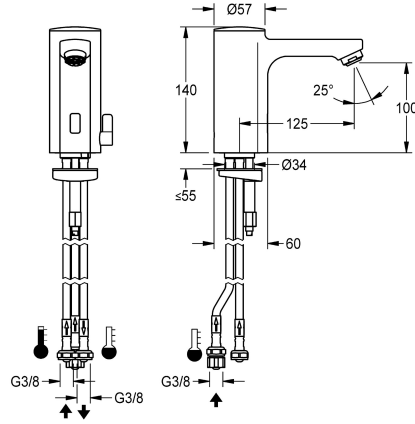


KWC F5E-Mix

Electronic pillar mixer with battery operation for hot water heaters

Modell-Linie: F5E | F5EM1005

Taps | Electronic taps



KWC-No.

2030031350

F5E-Mix pillar mixer DN 15 for sanitary facilities, opto-electronically controlled. For connection via hoses to open low-level domestic hot water heaters. Control electronics, solenoid valve cartridge, 6 V lithium battery (CR-P2) and sensor in all-metal housing, high-polished chromium-plated brass. Temperature lever with adjustable, turn-proof temperature stop as well as conversion set

for concealed mixing device. With jet controller. Activated water hygiene flushing 24 hours after last activation, safety switch-off with continuous reflection and saving of statistical data. With option for parameterization and communication via optional, bidirectional remote control.

Technical Data

with backflow preventer
calculation flow rate cold wat
compatible A3000 open
default automatic hygiene flus
depressurised
with filter
functional principle
hygiene flushing
diameter nominal
inlet size
Locking mechanism
material fitting
minimum flow pressure
type of mixing
number of batteries
Parameterization
Pop-up waste set
power supply connection
power consumption
Type of power supply
protective system IP
with rosettes/cover plate
protective shutdown
sound insulation
Spout

yes
0.08 l/s
no
24h after the last activity
yes
yes
electronic self-closing
yes
DN 15
G 3/8
Top section, non-ceramic
brass
1 bar
yes
1
remote control
no
Battery 6 V
1.5 Voltampere
Battery
IP59K
no
yes
no
fixed



KWC F5E-Mix

Electronic pillar mixer with battery operation for hot water heaters

Modell-Linie: F5E | F5EM1005

Taps | Electronic taps

spout projection	125 mm
surface finish fitting	chromed
surface treatment fitting	polished
temperature limit	yes
thermal disinfection	no
with transformer/power supply	no
type of batteries	CR-P2 Lithium battery 6V
type of mounting	tap hole
type of operation	sensor operation
type of sensor	opto-electronic sensor
type of tap	pillar tap
volume flow rate at 3 bar	0.08 l/s
water connection	hose (gland nut)
Accent colour	none
Basic colour	chrome-look (glossy)

Optional Accessories



Bidirectional remote control for electronic fittings F3 and F5

2030036654
ACEX9005



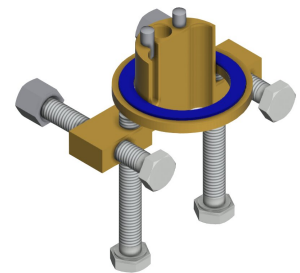
2-button remote control for fittings F3 and F5

2030036849
ACEX9004



Unpressurised small storage tank

2000109145
ACXM1001



Anti-twist protection for F5S

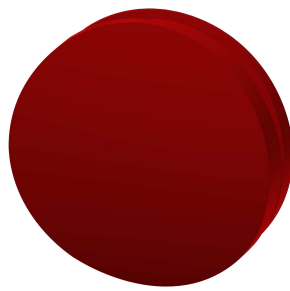
2030035383
ACXX1001

Spare Parts



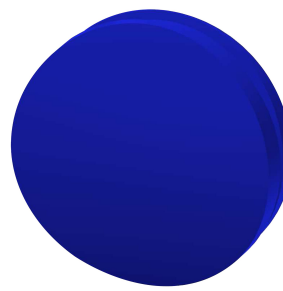
Cap

2030041558



Plug red

2030041951



Plug blue

2030041952



Lithium battery 6 V

2000104846

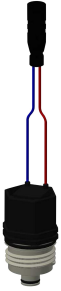
KWC F5E-Mix

Electronic pillar mixer with battery operation for hot water heaters

Modell-Linie: F5E | F5EM1005

Taps | Electronic taps

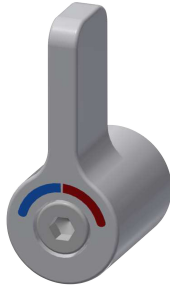
ASEX1007



Solenoid valve cartridge

2030045522
ACXX9002

ASEX1009



Temperature selection lever

2030041431
ASEM1001

ASEX1010



Hose

2030041311
ASXX1005

EPRTR0008



Hose

2030041313
ASXX1006



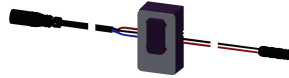
Quick-action fastener

2030043596
ASEX1013



Water way

2030041949
ASEX1008



Sensor, ID 01/00004

2030041458
ASEX1005