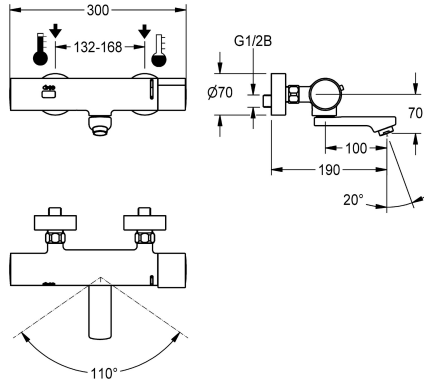


KWC

F3E-Therm electronic thermostatic wall-mounted mixer

Modell-Linie: F3E | F3ET1002
Taps | Electronic taps



KWC-No.

2030032506

2030032507

Projection 130 mm

2030026612

Projection 250 mm

spout projection

190 mm

130 mm

250 mm

F3E-Therm thermostatic mixer DN 15 for wall mounting with lockable swivelling spout, for sanitary facilities. Opto-electronically controlled, triggered via hand movement. Thermostat with metal handle with adjustable and turn-proof temperature stop. With the option of manual thermal disinfection. For connection to hot and cold water. Control electronics, solenoid valve cartridge, 6 V lithium battery (CR-P2) and sensor in all-metal housing, high-polished

chromium-plated brass. Laminar jet controller with integrated flow regulator 6.0 l/min. With adjustable connections with backflow preventer, strainers and screw rosettes. Projection 190 mm. Activated water hygiene flushing 24 hours after last activation, safety switch-off with continuous reflection and saving of statistical data. With option for parameterization and communication via optional, bidirectional remote control.

Technical Data

with backflow preventer

yes

calculation flow rate cold wat

0.07 l/s

calculation flow rate hot water

0.07 l/s

compatible A3000 open

no

default automatic hygiene flush

24h after the last activity

default flow time

10 Seconds

depressurised

no

with filter

yes

adjustable flow time

yes

functional principle

electronic self-closing

hygiene flushing

yes

diameter nominal

DN 15

inlet size

G 1/2 B

Locking mechanism

Top section, non-ceramic

material fitting

brass

maximum flow time

255 Seconds

minimum flow pressure

1 bar

minimum flow time

1 Seconds

type of mixing

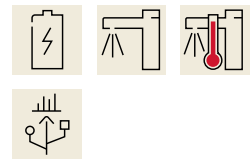
with thermostat

number of batteries

1

Parameterization

remote control



KWC

F3E-Therm electronic thermostatic wall-mounted mixer

Modell-Linie: F3E | F3ET1002

Taps | Electronic taps

| | |
|-------------------------------|-----------------------------|
| Pop-up waste set | no |
| power supply connection | Battery 6 V |
| power consumption | 1.5 Voltampere |
| Type of power supply | Battery |
| protective system IP | IP59K |
| with rosettes/cover plate | yes |
| protective shutdown | yes |
| sound insulation | no |
| Spout | rotating, bottom |
| spout projection | 190 mm |
| surface finish fitting | chromed |
| surface treatment fitting | polished |
| temperature limit | yes |
| thermal disinfection | manual thermal disinfection |
| with transformer/power supply | no |
| type of batteries | CR-P2 Lithium battery 6V |
| type of mounting | wall mounting |
| type of operation | sensor operation |
| type of sensor | opto-electronic sensor |
| type of tap | bib tap |
| volume flow rate at 3 bar | 0.1 l/s |
| water connection | S-connections |
| Accent colour | none |
| Basic colour | chrome-look (glossy) |

Optional Accessories



Bidirectional remote control for electronic fittings F3 and F5

2030036654
ACEX9005



2-button remote control for fittings F3 and F5

2030036849
ACEX9004



Screw connection

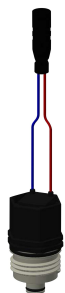
2030041416
ACXX9001

Spare Parts

KWC

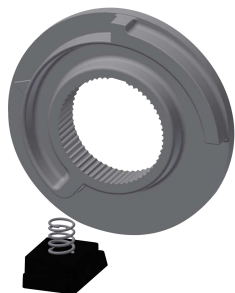
F3E-Therm electronic thermostatic wall-mounted mixer

Modell-Linie: F3E | F3ET1002
Taps | Electronic taps



Solenoid valve cartridge

2030045522
ACXX9002



Temperature stop

2030003296
EAQLT0003
