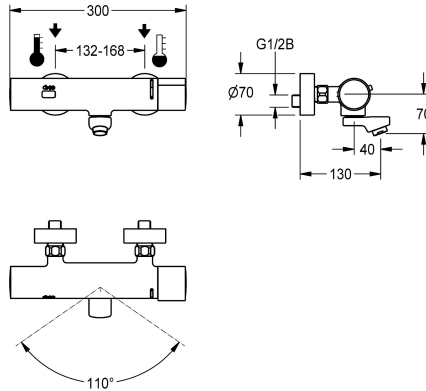


## KWC

### F3E-Therm electronic thermostatic wall-mounted mixer

Modell-Linie: F3E | F3ET1001  
Taps | Electronic taps



#### KWC-No.

**2030032506**

**2030032507**

Projection 130 mm

**2030026612**

Projection 250 mm

#### spout projection

190 mm

130 mm

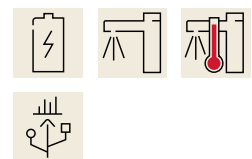
250 mm

F3E-Therm thermostatic mixer DN 15 for wall mounting with lockable swivelling spout, for sanitary facilities. Opto-electronically controlled, triggered via hand movement. Thermostat with metal handle with adjustable and turn-proof temperature stop. With the option of manual thermal disinfection. For connection to hot and cold water. Control electronics, solenoid valve cartridge, 6 V lithium battery (CR-P2) and sensor in all-metal housing, high-polished

chromium-plated brass. Laminar jet controller with integrated flow regulator 6.0 l/min. With adjustable connections with backflow preventer, strainers and screw rosettes. Projection 130 mm. Activated water hygiene flushing 24 hours after last activation, safety switch-off with continuous reflection and saving of statistical data. With option for parameterization and communication via optional, bidirectional remote control.

#### Technical Data

with backflow preventer	yes
calculation flow rate cold water	0.07 l/s
calculation flow rate hot water	0.07 l/s
compatible A3000 open	no
default automatic hygiene flush	24h after the last activity
default flow time	10 Seconds
depressurised	no
with filter	yes
adjustable flow time	yes
functional principle	electronic self-closing
hygiene flushing	yes
diameter nominal	DN 15
inlet size	G 1/2 B
Locking mechanism	Top section, non-ceramic
material fitting	brass
maximum flow time	255 Seconds
minimum flow pressure	1 bar
minimum flow time	1 Seconds
type of mixing	with thermostat
number of batteries	1
Parameterization	remote control



## KWC

### F3E-Therm electronic thermostatic wall-mounted mixer

Modell-Linie: F3E | F3ET1001

Taps | Electronic taps

Pop-up waste set	no
power supply connection	Battery 6 V
power consumption	1.5 Voltampere
Type of power supply	Battery
protective system IP	IP59K
with rosettes/cover plate	yes
protective shutdown	yes
sound insulation	no
Spout	rotating, bottom
spout projection	130 mm
surface finish fitting	chromed
surface treatment fitting	polished
temperature limit	yes
thermal disinfection	manual thermal disinfection
with transformer/power supply	no
type of batteries	CR-P2 Lithium battery 6V
type of mounting	wall mounting
type of operation	sensor operation
type of sensor	opto-electronic sensor
type of tap	bib tap
volume flow rate at 3 bar	0.1 l/s
water connection	S-connections
Accent colour	none
Basic colour	chrome-look (glossy)

### Optional Accessories



**Bidirectional remote control for electronic fittings F3 and F5**

**2030036654**  
ACEX9005



**2-button remote control for fittings F3 and F5**

**2030036849**  
ACEX9004



**Screw connection**

**2030041416**  
ACXX9001

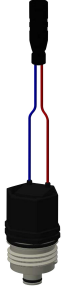
### Spare Parts

## KWC

F3E-Therm electronic thermostatic wall-mounted mixer

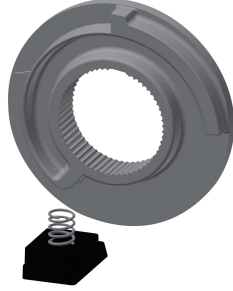
Modell-Linie: F3E | F3ET1001

Taps | Electronic taps



**Solenoid valve cartridge**

**2030045522**  
ACXX9002



**Temperature stop**

**2030003296**  
EAQLT0003