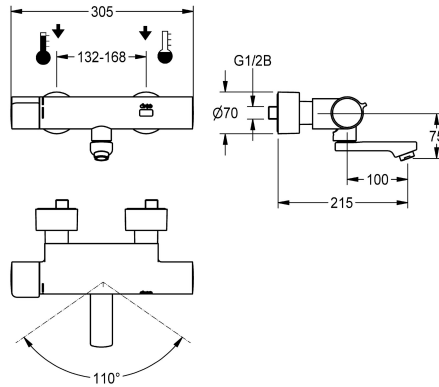


## KWC F5E-Therm Electronic thermostatic wall-mounted mixer for

Modell-Linie: F5E | F5ET1002  
Taps | Electronic taps



KWC-No.
<b>2030032981</b> Projection 215 mm
<b>2030032980</b> Projection 155 mm
<b>2030032983</b> Projection 275 mm
<b>2030039527</b> with projection 155 mm and pre-installed disinfection unit
<b>2030039528</b> with projection 215 mm and pre-installed disinfection unit
<b>2030039529</b> with projection 275 mm and pre-installed disinfection unit

spout projection
215 mm
155 mm
275 mm
155 mm
215 mm
275 mm

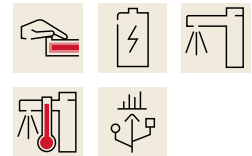
thermal disinfection
yes
yes
yes
automatic thermal disinfection
automatic thermal disinfection
automatic thermal disinfection

F5E-Therm thermostatic mixer DN 15 for wall mounting with lockable swivelling spout, for sanitary facilities. Opto-electronically controlled, triggered via hand movement. Thermostat with metal handle and adjustable, turn-proof temperature stop. With option for thermal disinfection, manually or automatically via optional disinfection unit. For connection to hot and cold water. Control electronics, solenoid valve cartridge, 6 V lithium battery (CR-P2) and sensor in scald-protected safe-touch housing, high-polished

chromium-plated brass. Laminar jet controller with integrated flow regulator 6.0 l/min. With adjustable and lockable connections with backflow preventer and strainers, completely covered with depth-adjustable screw rosettes. Projection 215 mm. Activated water hygiene flushing 24 hours after last activation, safety switch-off with continuous reflection and saving of statistical data. With option for parameterization and communication via optional, bidirectional remote control.

Technical Data
with backflow preventer
calculation flow rate cold wat
calculation flow rate hot wate
compatible A3000 open
default automatic hygiene flus
default flow time
depressurised
with filter
adjustable flow time
functional principle
hygiene flushing
diameter nominal
inlet size
Locking mechanism
material fitting
maximum flow time

yes
0.07 l/s
0.07 l/s
no
24h after the last activity
10 Seconds
no
yes
yes
electronic self-closing
yes
DN 15
G 1/2 B
Top section, non-ceramic
brass
255 Seconds



## KWC F5E-Therm

Electronic thermostatic wall-mounted mixer for

**Modell-Linie: F5E | F5ET1002**

Taps | Electronic taps

minimum flow pressure	1 bar
minimum flow time	1 Seconds
type of mixing	with thermostat
number of batteries	1
Parameterization	remote control
Pop-up waste set	no
power supply connection	Battery 6 V
power consumption	1.5 Voltampere
Type of power supply	Battery
protective system IP	IP59K
with rosettes/cover plate	yes
protective shutdown	yes
sound insulation	no
Spout	rotating, bottom
spout projection	215 mm
surface finish fitting	chromed
surface treatment fitting	polished
temperature limit	yes
thermal disinfection	yes
with transformer/power supply	no
type of batteries	CR-P2 Lithium battery 6V
type of mounting	wall mounting
type of operation	sensor operation
type of sensor	opto-electronic sensor
type of tap	bib tap
Volume flow rate bypass PWH	0.05 l/s
volume flow rate at 3 bar	0.1 l/s
water connection	S-connections
Accent colour	none
Basic colour	chrome-look (glossy)

### Optional Accessories



**Bidirectional remote control for electronic fittings F3 and F5**

**2030036654**  
ACEX9005



**2-button remote control for fittings F3 and F5**

**2030036849**  
ACEX9004



**Thermal disinfection unit for F5E-Therm thermostatic wall mixers**

**2030039541**  
ACET9001



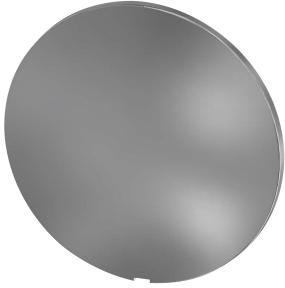
**Theft-proof housing for aerator**

**2000104778**  
ZTAPS0005

## KWC F5E-Therm Electronic thermostatic wall-mounted mixer for

Modell-Linie: F5E | F5ET1002  
Taps | Electronic taps

### Spare Parts



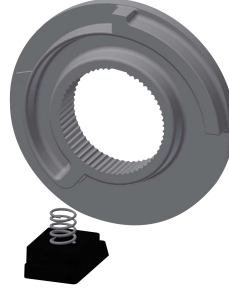
Cover

**2030003258**  
EAQLT0002



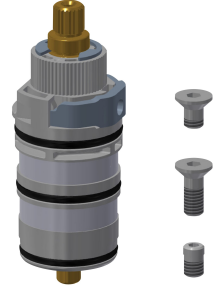
Temperature handle

**2030047082**  
ASXT9003



Temperature stop

**2030003296**  
EAQLT0003



Thermocouple

**2030003300**  
EAQLT0004



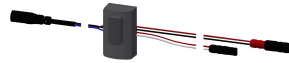
Swivel spout, 100 mm

**2030032671**  
ASXX1001



Laminar jet regulator

**2030012352**  
ETAPS0037



Sensor, ID 02/00002

**2030041459**  
ASXT9001



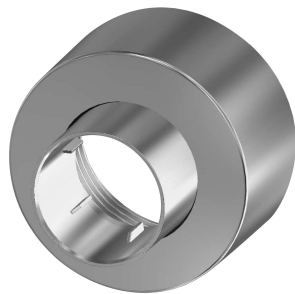
Solenoid valve cartridge

**2030045522**  
ACXX9002



Lithium battery 6 V

**2000104846**  
EPRTR0008



Screw rosette

**2030046777**  
ASXX9003



Mounting set

**2030003401**  
EAQLT0009