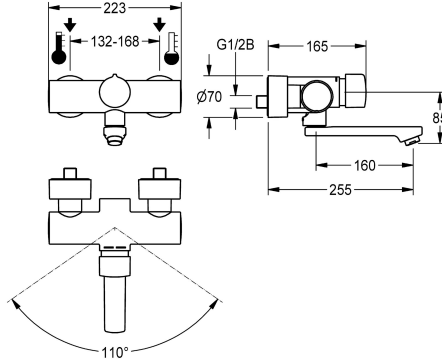


## KWC F5S-Mix Self-closing wall-mounted mixer

Modell-Linie: F5S | F5SM1005  
Taps | Self closing taps



KWC-No.
<b>2030032992</b> Projection 195 mm
<b>2030032991</b> Projection 135 mm
<b>2030032993</b> Projection 255 mm
<b>2030040314</b> with projection 135 mm and aerator with flow regulator 3.0 l/min
<b>2030040316</b> with projection 195 mm and aerator with flow regulator 3.0 l/min
<b>2030040317</b> with projection 255 mm and aerator with flow regulator 3.0 l/min

spout projection
195 mm
135 mm
255 mm
135 mm
195 mm
255 mm

volume flow rate at 3 bar
0.1 l/s
0.1 l/s
0.1 l/s
0.05 l/s
0.05 l/s
0.05 l/s

F5S mix self-closing wall-mounted mixer DN 15 as single-mixer tap for wall mounting with lockable swivelling spout, for sanitary facilities. FRAMIC self-closing mixing cartridge, hydraulically controlled, low-maintenance and stagnation-free, with ceramic disc technology, self-closing, flow pressure-independent due to medium-separated design. Stepless adjustment of flow duration. With

adjustable, turn-proof temperature stop. Connects to hot and cold water. All-metal construction, high-polished chromium-plated brass. Laminar jet controller with integrated flow regulator 6.0 l/min. With adjustable and lockable connections with backflow preventer and strainers, completely covered with depth-adjustable screw rosettes. Projection 255 mm.

### Technical Data

with backflow preventer
calculation flow rate cold wat
calculation flow rate hot wate
compatible A3000 open
depressurised
with filter
adjustable flow time
functional principle
hygiene flushing
diameter nominal
inlet size
Locking mechanism
material fitting
maximum flow time
minimum flow pressure
minimum flow time
type of mixing

yes
0.07 l/s
0.07 l/s
no
no
yes
yes
hydraulic self-closing
no
DN 15
G 1/2 B
Top section, ceramic
brass-lock
35 Seconds
0.5 bar
5 Seconds
yes



## KWC F5S-Mix Self-closing wall-mounted mixer

Modell-Linie: F5S | F5SM1005  
Taps | Self closing taps

Pop-up waste set	no
with rosettes/cover plate	yes
protective shutdown	no
sound insulation	no
Spout	rotating, bottom
spout projection	255 mm
surface finish fitting	chromed
surface treatment fitting	polished
temperature limit	yes
thermal disinfection	no
type of mounting	wall mounting
type of operation	manual operation
type of tap	bib tap
volume flow rate at 3 bar	0.1 l/s
water connection	S-connections
Accent colour	none
Basic colour	chrome-look (glossy)

### Optional Accessories



#### Theft-proof housing for aerator

**2000104778**  
ZTAPS0005

### Spare Parts



Screw rosette



Mounting set



Plug chromed



Handle push cap

## KWC F5S-Mix Self-closing wall-mounted mixer

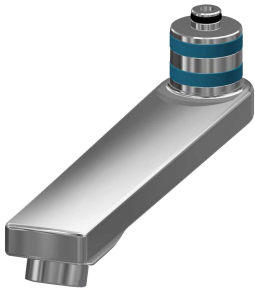
Modell-Linie: F5S | F5SM1005  
Taps | Self closing taps

**2030046777**  
ASXX9003



**Temperature stop**

**2030046189**  
ASSM9002



**Swivel spout, 160 mm**

**2030032815**  
ASXX1002

**2030003401**  
EAQLT0009



**Safety ring**

**2030048357**  
ASXX9003

**2030053006**  
ASSX9004



**FRAMIC self-closing mixing cartridge**

**2030046185**  
ASSM9001

**2030050753**  
ASSM9004



**Laminar jet regulator**

**2030012352**  
ETAPS0037