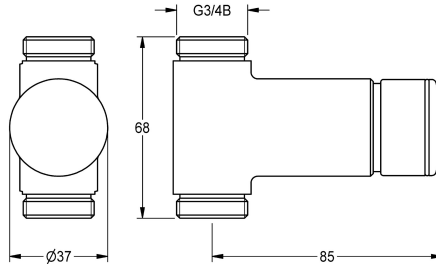


KWC F3S Self-closing straight-way valve

Modell-Linie: F3S | F3SV2002
Showers | Self closing showers



KWC-No.

2030034415

F3S self-closing straight-way valve DN 15 for surface mounting for shower facilities. Self-closing functional part, hydraulically controlled, piston-free design, self-closing, stepless adjustment of

flow duration. For connection to pre-mixed hot water or cold water. Housing including changeable valve seat, with external thread G 3/4 B, high-polished chromium-plated brass.

Technical Data

additional connections
with backflow preventer
calculation flow rate cold wat
circulation
connection with pay water disp
with filter
adjustable flow time
functional principle
for hand shower
hygiene flushing
diameter nominal
inlet size
Locking mechanism
material fitting
maximum flow time
minimum flow pressure
minimum flow time
type of mixing
with rosettes/cover plate
protective shutdown
shower pipe draining
sound insulation
surface finish fitting
surface treatment fitting
temperature limit
thermal disinfection

no
no
0.15 l/s
no
not possible
no
yes
hydraulic self-closing
no
no
DN 15
G 3/4 B
Top section, non-ceramic
brass-look
35 Seconds
1 bar
5 Seconds
no
no
no
no
no
chromed
polished
no
no

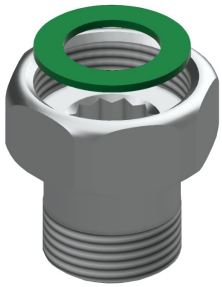
KWC F3S Self-closing straight-way valve

Modell-Linie: F3S | F3SV2002
Showers | Self closing showers

type of mounting
type of operation
type of shower
volume flow rate at 3 bar
water connection
position of water connection
Accent colour
Basic colour

pipe mounting
manual operation
wall fitting
0.2 l/s
threaded connection (external)
from bottom
none
chrome-look (glossy)

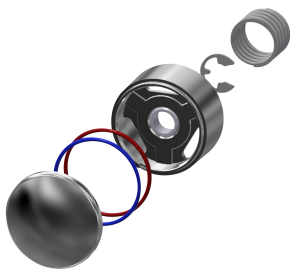
Optional Accessories



DN 15 screw connection

2000105938
ACSV2001

Spare Parts



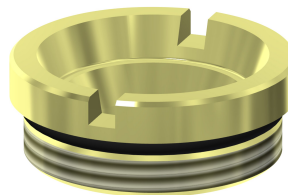
Push cap

2030042960
ASSV2001



Functional part

2000104352
ESHOW0001



Valve seat DN 15

2000104790
ESHOW0040



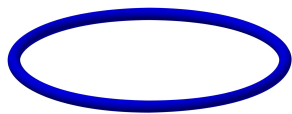
O-Ring, red

2030042961
ASSV2002

KWC F3S

Self-closing straight-way valve

Modell-Linie: F3S | F3SV2002
Showers | Self closing showers



O-Ring, blue

2030042962
ASSV2003
