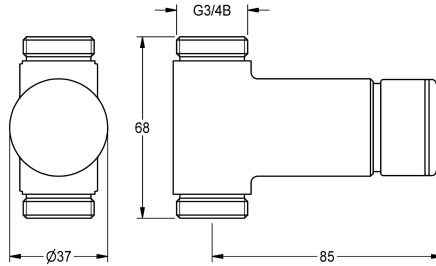


KWC F3S Self-closing straight-way valve

Modell-Linie: F3S | F3SV2002
Showers | Self closing showers



KWC-No.

2030034415

F3S self-closing straight-way valve DN 15 for surface mounting for shower facilities. Self-closing functional part, hydraulically controlled, piston-free design, self-closing, stepless adjustment of

flow duration. For connection to pre-mixed hot water or cold water. Housing including changeable valve seat, with external thread G 3/4 B, high-polished chromium-plated brass.

Technical Data

additional connections
with backflow preventer
calculation flow rate cold wat
circulation
connection with pay water disp
with filter
adjustable flow time
functional principle
for hand shower
hygiene flushing
diameter nominal
inlet size
Locking mechanism
material fitting
maximum flow time
minimum flow pressure
minimum flow time
type of mixing
with rosettes/cover plate
protective shutdown
shower pipe draining
sound insulation
surface finish fitting
surface treatment fitting
temperature limit
thermal disinfection

no
no
0.15 l/s
no
not possible
no
yes
hydraulic self-closing
no
no
DN 15
G 3/4 B
Top section, non-ceramic
brass
35 Seconds
1 bar
5 Seconds
no
no
no
no
no
chromed
polished
no
no

KWC F3S

Self-closing straight-way valve

Modell-Linie: F3S | F3SV2002

Showers | Self closing showers

type of mounting

type of operation

type of shower

volume flow rate at 3 bar

water connection

position of water connection

Accent colour

Basic colour

pipe mounting

manual operation

wall fitting

0.2 l/s

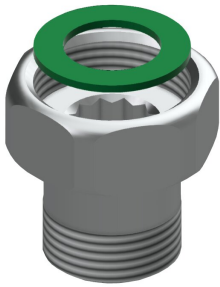
threaded connection (external)

from bottom

none

chrome-look (glossy)

Optional Accessories



DN 15 screw connection

2000105938
ACSV2001

Spare Parts



Functional part

2000104352
ESHOW001