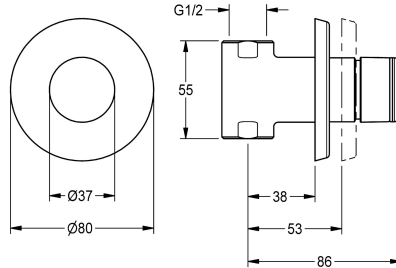


KWC

F3S self-closing straight-way valve

Modell-Linie: F3S | F3SV2003

Showers | Self closing showers



KWC-No.

2030034416

F3S self-closing straight-way valve DN 15 for in-wall mounting with noise-reducing styrene cladding, for shower facilities. Self-closing functional part, hydraulically controlled, piston-free design, self-closing, stepless adjustment of flow duration. For connection to

pre-mixed hot water or cold water. Casing including changeable valve seat, with internal thread G 1/2, visible parts high-polished, chromium-plated brass. With rosette, depth adjustability 15 mm.

Technical Data

additional connections	no
with backflow preventer	no
Built-in fitting model	Built-in + finishing section
calculation flow rate cold wat	0.15 l/s
circulation	no
connection with pay water disp	not possible
with filter	no
adjustable flow time	yes
functional principle	hydraulic self-closing
for hand shower	no
hygiene flushing	no
diameter nominal	DN 15
inlet size	G 1/2
Locking mechanism	Top section, non-ceramic
material fitting	brass
maximum flow time	35 Seconds
minimum flow pressure	1 bar
minimum flow time	5 Seconds
type of mixing	no
with rosettes/cover plate	yes
protective shutdown	no
shower pipe draining	no
sound insulation	no
surface finish fitting	chromed
surface treatment fitting	polished
temperature limit	no

KWC

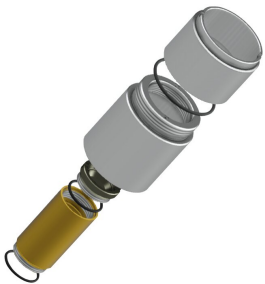
F3S self-closing straight-way valve

Modell-Linie: **F3S** | **F3SV2003**

Showers | Self closing showers

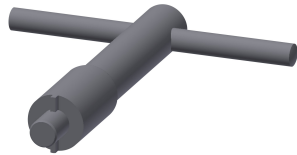
thermal disinfection	no
type of mounting	in-wall installation without b
type of operation	manual operation
type of shower	in-wall fitting
volume flow rate at 3 bar	0.2 l/s
water connection	threaded connection (internal)
position of water connection	from bottom
Accent colour	none
Basic colour	chrome-look (glossy)

Optional Accessories



Extension set

2000101451
AQRM900



Valve seat key

2000101454
AQRM967

Spare Parts



Functional part

2000104352
ESHOW001



Hexagonal socket wrench

2000106127
ZFITG0003