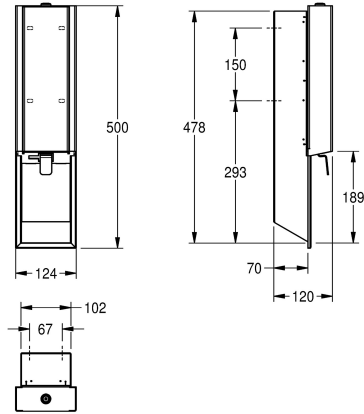


## KWC EXOS.

Soap dispenser for recessed mounting

Modell-Linie: EXOS | EXOS618EX  
Accessories | Soap dispensers



### KWC-No.

**2030034637**

Front with InoxPlus surface refinement

**2030034638**

InoxPlus-coated main housing, black toughened safety glass front panel

**2030034667**

InoxPlus-coated main housing, white toughened safety glass front panel

### Accent colour

stainless steel

black

white

Soap dispenser for recessed mounting, stainless steel with satin finish, front and casing with InoxPlus surface refinement for the reduction of finger marks and better cleaning characteristics (easy to clean), material thickness 1.2 mm, suitable for liquid soap and

lotions, 800 ml refill tank, with stainless steel push lever, easy to refill with soap tank on front panel, includes mounting materials.

Dimensions 124 x 500 x 120 mm (W x H x D)

### Technical Data

filling quantity

0,8

filling quantity uom

liter

lock

key-lock

material

stainless steel

material code

1.4301 Chrome Nickel steel V2A

material thickness

1.2 mm

overall depth

120 mm

overall height

500 mm

overall width

124 mm

surface treatment

InoxPlus (anti fingerprint)

type of fixing

screw

type of mounting

recessed mounting

type of operation

manual operation

type of soap container

integrated refillable tank

Accent colour

stainless steel

Basic colour

stainless steel

**INOX PLUS**

### Optional Accessories

## KWC EXOS.

Soap dispenser for recessed mounting

Modell-Linie: EXOS | EXOS618EX

Accessories | Soap dispensers



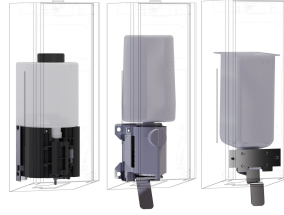
**EXOS. front with black safety glass panel for soap dispenser for recessed mounting**

**2030034654**  
ZEXOS616EB



**EXOS. front with white safety glass panel for soap dispenser for recessed mounting**

**2030034710**  
ZEXOS616EW



**EXOS. conversion kit for EXOS. soap dispenser**

**2030022954**  
ZEXOS625K



**EXOS. conversion kit for foam soap dispenser**

**2030022955**  
ZEXOS616K

## Consumables



**Liquid soap**

**2030058103**  
SO1LP



**Liquid soap**

**2000057168**  
SO10L