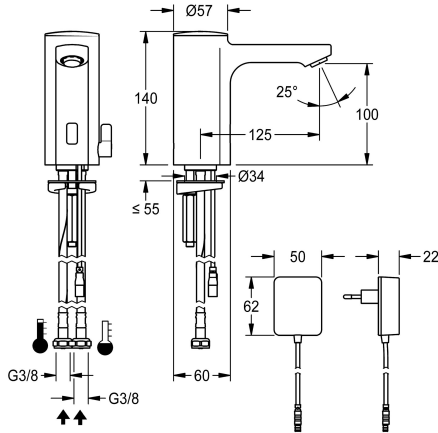


KWC F5E-Mix

Electronic pillar mixer with plug-in power supply unit

Modell-Linie: F5E | F5EM1002
Taps | Electronic taps



KWC-No.

2030035328

F5E-Mix pillar mixer DN 15 for sanitary facilities, opto-electronically controlled. For connection to hot and cold water via hoses with integrated backflow preventer and strainers. Control electronics, solenoid valve cartridge and sensor in all-metal housing, high-polished chromium-plated brass. Temperature lever with adjustable, turn-proof temperature stop as well as conversion set

for concealed mixing device. Anti-theft aerator, design SLIM, with integrated flow regulator 5.0 l/min. Activated water hygiene flushing 24 hours after last activation, safety switch-off with continuous reflection and saving of statistical data. With option for parameterization and communication via optional, bidirectional remote control. With 100 - 240 V AC plug-in power supply unit.

Technical Data

with backflow preventer	yes
calculation flow rate cold water	0.07 l/s
calculation flow rate hot water	0.07 l/s
compatible A3000 open	no
default automatic hygiene flush	24h after the last activity
depressurised	no
with filter	yes
functional principle	electronic self-closing
hygiene flushing	yes
diameter nominal	DN 15
inlet size	G 3/8
Locking mechanism	Top section, non-ceramic
material fitting	brass-look
minimum flow pressure	1 bar
type of mixing	yes
Parameterization	remote control
Pop-up waste set	no
power supply connection	100 - 240 V AC
position of power connection	from bottom
power consumption	1.5 Voltampere
Type of power supply	Transformer
protective system IP	IP59K
with rosettes/cover plate	no
protective shutdown	yes
sound insulation	no



KWC F5E-Mix

Electronic pillar mixer with plug-in power supply unit

Modell-Linie: F5E | F5EM1002

Taps | Electronic taps

Spout	fixed
spout projection	125 mm
surface finish fitting	chromed
surface treatment fitting	polished
temperature limit	yes
thermal disinfection	no
with transformer/power supply	yes
type of mounting	tap hole
type of operation	sensor operation
type of sensor	opto-electronic sensor
type of tap	pillar tap
volume flow rate at 3 bar	0.08 l/s
water connection	hose (gland nut)
Accent colour	none
Basic colour	chrome-look (glossy)

Optional Accessories



Bidirectional remote control for electronic fittings F3 and F5

2030036654
ACEX9005



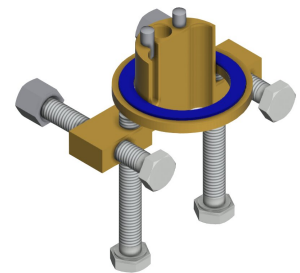
2-button remote control for fittings F3 and F5

2030036849
ACEX9004



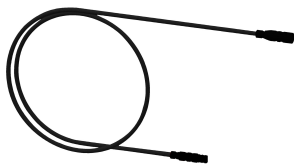
Socket

2030040334
ACEX1001



Anti-twist protection for F5S

2030035383
ACXX1001



Extension cable 5 m

2030043814
ACEX9010



PURETHERM under-table thermostat

2030012758
PURE0031



5.0 l/min aerator, angle-adjustable

2030041326
ACXX1002



3.0 l/min. aerator

2030041424
ASXX1008

KWC F5E-Mix

Electronic pillar mixer with plug-in power supply unit

Modell-Linie: F5E | F5EM1002

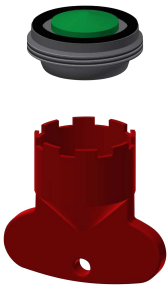
Taps | Electronic taps



Aerator 1.8 l/min

2030041442
ACXX1005

Spare Parts



Aerator 5.0 l/min

2030041011
ASXX1004



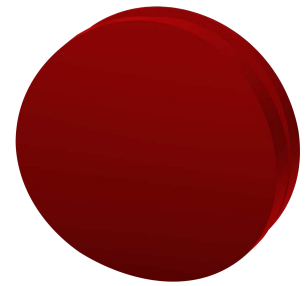
Mounting key

2030041329
ACXX1003



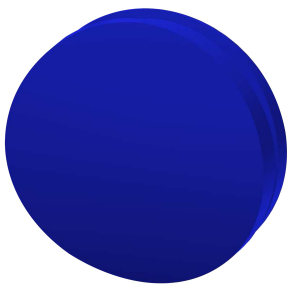
Cap

2030041558
ASEX1007



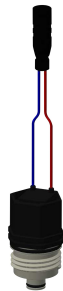
Plug red

2030041951
ASEX1009



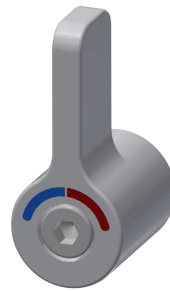
Plug blue

2030041952
ASEX1010



Solenoid valve cartridge

2030045522
ACXX9002



Temperature selection lever

2030041431
ASEM1001



Hose

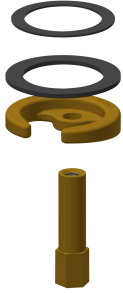
2030041320
ASXM1001

KWC F5E-Mix

Electronic pillar mixer with plug-in power supply unit

Modell-Linie: F5E | F5EM1002

Taps | Electronic taps



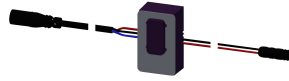
Quick-action fastener

2030043596
ASEX1013



Water way

2030041949
ASEX1008



Sensor, ID 01/00004

2030041458
ASEX1005



Plug-in power supply unit

360002062
ACEX9022