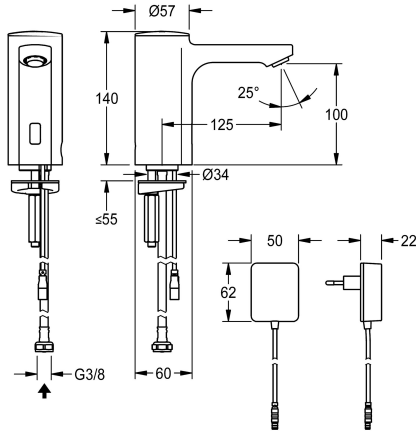


## KWC F5E

Electronic pillar tap with plug-in power supply unit

Modell-Linie: F5E | F5EV1002  
Taps | Electronic taps



### KWC-No.

2030035330

2030039436

with flow regulator 3.0 l/min

### volume flow rate at 3 bar

0.08 l/s

0.05 l/s

F5E pillar tap DN 15 for sanitary facilities, opto-electronically controlled. For connection to pre-mixed hot or cold water via hose and strainer. Control electronics, solenoid valve cartridge and sensor in all-metal housing, high-polished chromium-plated brass. Anti-theft aerator, design SLIM, with integrated flow regulator 5.0 l/min.

Activated water hygiene flushing 24 hours after last activation, safety switch-off with continuous reflection and saving of statistical data. With option for parameterization and communication via optional, bidirectional remote control. With 100 - 240 V AC plug-in power supply unit.

### Technical Data

with backflow preventer

no

calculation flow rate cold wat

0.1 l/s

compatible A3000 open

no

default automatic hygiene flus

24h after the last activity

depressurised

no

with filter

yes

functional principle

electronic self-closing

hygiene flushing

yes

diameter nominal

DN 15

inlet size

G 3/8

Locking mechanism

Top section, non-ceramic

material fitting

brass-look

minimum flow pressure

1 bar

type of mixing

no

Parameterization

remote control

Pop-up waste set

no

power supply connection

100 - 240 V AC

position of power connection

from bottom

power consumption

1.5 Voltampere

Type of power supply

Transformer

protective system IP

IP59K

with rosettes/cover plate

no

protective shutdown

yes

sound insulation

no



## KWC F5E

Electronic pillar tap with plug-in power supply unit

**Modell-Linie: F5E | F5EV1002**

Taps | Electronic taps

Spout	fixed
spout projection	125 mm
surface finish fitting	chromed
surface treatment fitting	polished
temperature limit	no
thermal disinfection	no
with transformer/power supply	yes
type of mounting	tap hole
type of operation	sensor operation
type of sensor	opto-electronic sensor
type of tap	pillar tap
volume flow rate at 3 bar	0.08 l/s
water connection	hose (gland nut)
Accent colour	none
Basic colour	chrome-look (glossy)

### Optional Accessories



**Bidirectional remote control for electronic fittings F3 and F5**

**2030036654**  
ACEX9005



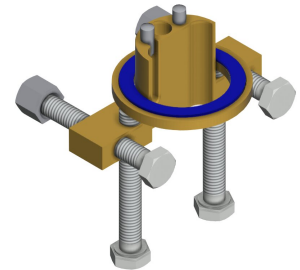
**2-button remote control for fittings F3 and F5**

**2030036849**  
ACEX9004



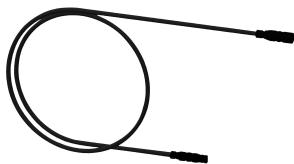
**Socket**

**2030040334**  
ACEX1001



**Anti-twist protection for F5S**

**2030035383**  
ACXX1001



**Extension cable 5 m**

**2030043814**  
ACEX9010



**PURETHERM under-table thermostat**

**2030012758**  
PURE0031



**5.0 l/min aerator, angle-adjustable**

**2030041326**  
ACXX1002



**3.0 l/min. aerator**

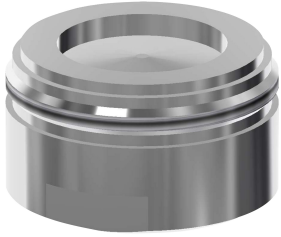
**2030041424**  
ASXX1008

## KWC F5E

Electronic pillar tap with plug-in power supply unit

Modell-Linie: F5E | F5EV1002

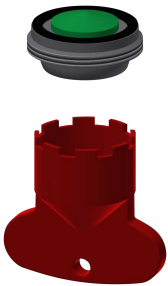
Taps | Electronic taps



### Aerator 1.8 l/min

2030041442  
ACXX1005

### Spare Parts



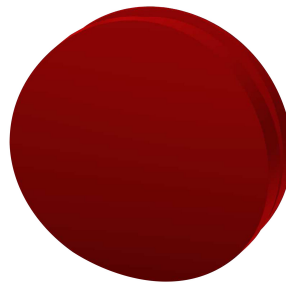
### Aerator 5.0 l/min

2030041011  
ASXX1004



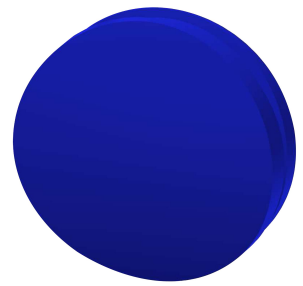
### Cap

2030041558  
ASEX1007



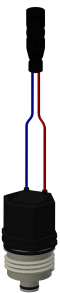
### Plug red

2030041951  
ASEX1009



### Plug blue

2030041952  
ASEX1010



### Solenoid valve cartridge

2030045522  
ACXX9002



### Hose

2030041311  
ASXX1005



### Quick-action fastener

2030043596  
ASEX1013



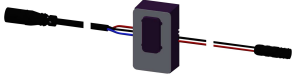
### Water way

2030041949  
ASEX1008

## KWC F5E

Electronic pillar tap with plug-in power supply unit

Modell-Linie: F5E | F5EV1002  
Taps | Electronic taps



### Sensor, ID 01/00004

**2030041458**  
ASEX1005

### Plug-in power supply unit

**360002062**  
ACEX9022

### Mounting key

**2030041329**  
ACXX1003