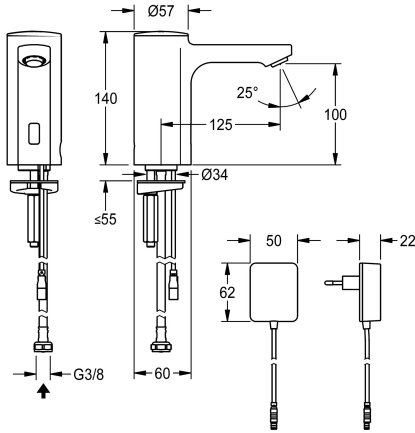


## KWC F5E

Electronic pillar tap with plug-in power supply unit

Modell-Linie: F5E | F5EV1002  
Taps | Electronic taps



**KWC-No.**

2030035330

2030039436  
with flow regulator 3.0 l/min

**volume flow rate at 3 bar**

0.08 l/s

0.05 l/s

F5E pillar tap DN 15 for sanitary facilities, opto-electronically controlled. For connection to pre-mixed hot or cold water via hose and strainer. Control electronics, solenoid valve cartridge and sensor in all-metal housing, high-polished chromium-plated brass. Anti-theft aerator, design SLIM, with integrated flow regulator 5.0 l/min.

Activated water hygiene flushing 24 hours after last activation, safety switch-off with continuous reflection and saving of statistical data. With option for parameterization and communication via optional, bidirectional remote control. With 100 - 240 V AC plug-in power supply unit.

**Technical Data**

with backflow preventer
calculation flow rate cold wat
compatible A3000 open
default automatic hygiene flus
depressurised
with filter
functional principle
hygiene flushing
diameter nominal
inlet size
Locking mechanism
material fitting
minimum flow pressure
type of mixing
Parameterization
Pop-up waste set
power supply connection
position of power connection
power consumption
Type of power supply
protective system IP
with rosettes/cover plate
protective shutdown
sound insulation

no
0.1 l/s
no
24h after the last activity
no
yes
electronic self-closing
yes
DN 15
G 3/8
Top section, non-ceramic
brass
1 bar
no
remote control
no
100 - 240 V AC
from bottom
1.5 Voltampere
Transformer
IP59K
no
yes
no



## KWC F5E

Electronic pillar tap with plug-in power supply unit

**Modell-Linie: F5E | F5EV1002**

Taps | Electronic taps

Spout	fixed
spout projection	125 mm
surface finish fitting	chromed
surface treatment fitting	polished
temperature limit	no
thermal disinfection	no
with transformer/power supply	yes
type of mounting	tap hole
type of operation	sensor operation
type of sensor	opto-electronic sensor
type of tap	pillar tap
volume flow rate at 3 bar	0.08 l/s
water connection	hose (gland nut)
Accent colour	none
Basic colour	chrome-look (glossy)

### Optional Accessories



**Bidirectional remote control for electronic fittings F3 and F5**

**2030036654**  
ACEX9005



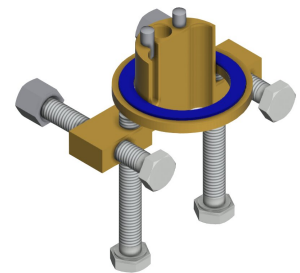
**2-button remote control for fittings F3 and F5**

**2030036849**  
ACEX9004



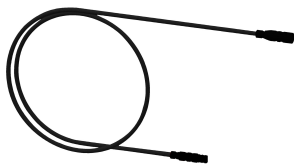
**Socket**

**2030040334**  
ACEX1001



**Anti-twist protection for F5S**

**2030035383**  
ACXX1001



**Extension cable 5 m**

**2030043814**  
ACEX9010



**PURETHERM under-table thermostat**

**2030012758**  
PURE0031



**5.0 l/min aerator, angle-adjustable**

**2030041326**  
ACXX1002



**3.0 l/min. aerator**

**2030041424**  
ASXX1008

## KWC F5E

Electronic pillar tap with plug-in power supply unit

Modell-Linie: F5E | F5EV1002

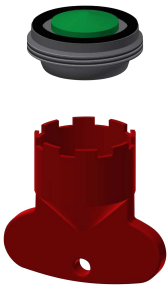
Taps | Electronic taps



### Aerator 1.8 l/min

2030041442  
ACXX1005

### Spare Parts



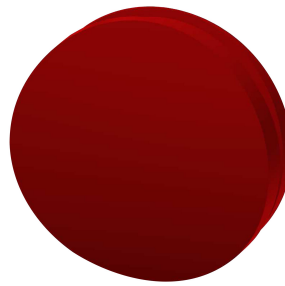
### Aerator 5.0 l/min

2030041011  
ASXX1004



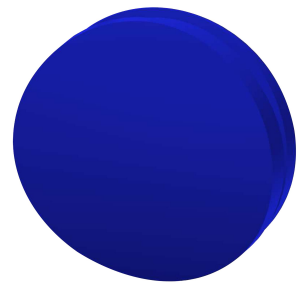
### Cap

2030041558  
ASEX1007



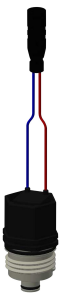
### Plug red

2030041951  
ASEX1009



### Plug blue

2030041952  
ASEX1010



### Solenoid valve cartridge

2030045522  
ACXX9002



### Hose

2030041311  
ASXX1005



### Quick-action fastener

2030043596  
ASEX1013



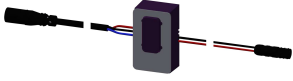
### Water way

2030041949  
ASEX1008

## KWC F5E

Electronic pillar tap with plug-in power supply unit

Modell-Linie: F5E | F5EV1002  
Taps | Electronic taps



### Sensor, ID 01/00004

**2030041458**  
ASEX1005

### Mounting key

**2030041329**  
ACXX1003