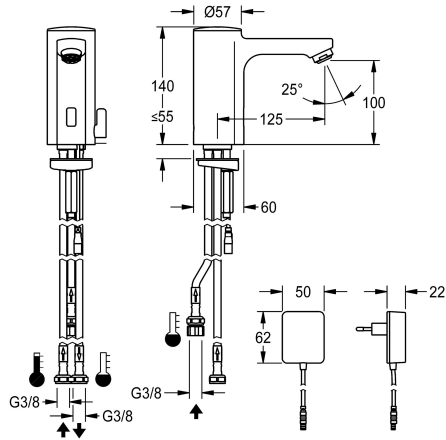


KWC F5E-Mix
Electronic pillar mixer with plug-in power supply unit for hot water heaters

Modell-Linie: F5E | F5EM1006
Taps | Electronic taps



KWC-No.
2030035332

F5E-Mix pillar mixer DN 15 for sanitary facilities, opto-electronically controlled. For connection via hoses to open low-level domestic hot water heaters. Control electronics, solenoid valve cartridge and sensor in all-metal housing, high-polished chromium-plated brass. Temperature lever with adjustable, turn-proof temperature stop as well as conversion set for concealed mixing device. With jet

controller. Activated water hygiene flushing 24 hours after last activation, safety switch-off with continuous reflection and saving of statistical data. With option for parameterization and communication via optional, bidirectional remote control. With 100 - 240 V AC plug-in power supply unit.

Technical Data

with backflow preventer	yes
calculation flow rate cold wat	0.08 l/s
compatible A3000 open	no
default automatic hygiene flus	24h after the last activity
depressurised	yes
with filter	yes
functional principle	electronic self-closing
hygiene flushing	yes
diameter nominal	DN 15
inlet size	G 3/8
Locking mechanism	Top section, non-ceramic
material fitting	brass-look
minimum flow pressure	1 bar
type of mixing	yes
Parameterization	remote control
Pop-up waste set	no
power supply connection	100 - 240 V AC
position of power connection	from bottom
power consumption	1.5 Voltampere
Type of power supply	Transformer
protective system IP	IP59K
with rosettes/cover plate	no
protective shutdown	yes
sound insulation	no
Spout	fixed



KWC F5E-Mix
Electronic pillar mixer with plug-in power supply unit for hot water heaters

Modell-Linie: F5E | F5EM1006
Taps | Electronic taps

spout projection	125 mm
surface finish fitting	chromed
surface treatment fitting	polished
temperature limit	yes
thermal disinfection	no
with transformer/power supply	yes
type of mounting	tap hole
type of operation	sensor operation
type of sensor	opto-electronic sensor
type of tap	pillar tap
volume flow rate at 3 bar	0.08 l/s
water connection	hose (gland nut)
Accent colour	none
Basic colour	chrome-look (glossy)

Optional Accessories



Bidirectional remote control for
electrical fittings F3 and F5

2030036654
ACEX9005



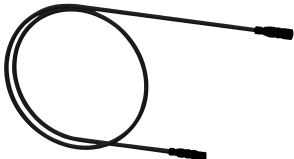
2-button remote control for fittings F3
and F5

2030036849
ACEX9004



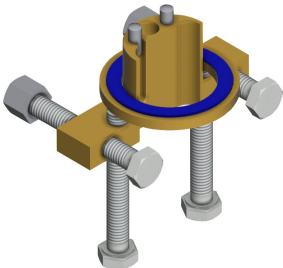
Unpressurised small storage tank

2000109145
ACXM1001



Extension cable 5 m

2030043814
ACEX9010



Anti-twist protection for F5S

2030035383
ACXX1001

Spare Parts

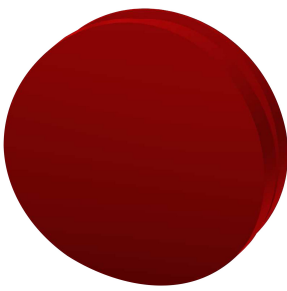


KWC F5E-Mix
Electronic pillar mixer with plug-in power supply unit for hot water heaters

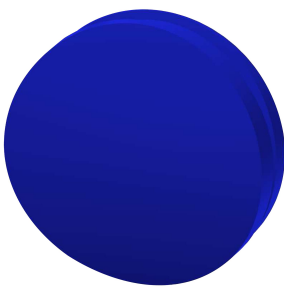
Modell-Linie: F5E | F5EM1006
Taps | Electronic taps



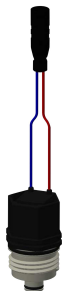
Cap
2030041558
ASEX1007



Plug red
2030041951
ASEX1009



Plug blue
2030041952
ASEX1010



Solenoid valve cartridge
2030045522
ACXX9002



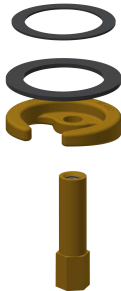
Temperature selection lever
2030041431
ASEM1001



Hose
2030041311
ASXX1005



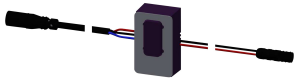
Hose
2030041313
ASXX1006



Quick-action fastener
2030043596
ASEX1013



Water way
2030041949
ASEX1008



Sensor, ID 01/00004
2030041458
ASEX1005



Plug-in power supply unit
3600002062
ACEX9022