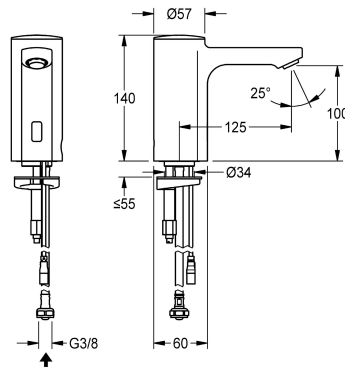


## KWC F5E

Electronic pillar tap for separate power supply

Modell-Linie: F5E | F5EV1004

Taps | Electronic taps



### KWC-No.

2030036158

2030039438

with flow regulator 3.0 l/min

### volume flow rate at 3 bar

0.08 l/s

0.05 l/s

F5E pillar tap DN 15 for sanitary facilities, opto-electronically controlled. For connection to pre-mixed hot or cold water via hose and strainer. Control electronics, solenoid valve cartridge and sensor in all-metal housing, high-polished chromium-plated brass. Anti-theft aerator, design SLIM, with integrated flow regulator 5.0 l/min. Activated water hygiene flushing 24 hours after last activation,

safety switch-off with continuous reflection and saving of statistical data. With option for parameterization and communication via optional, bidirectional remote control. Separate power supply via power supply unit 6.75 V / 12 V DC or AQUA 3000 open system accessories.

### Technical Data

with backflow preventer

calculation flow rate cold wat

compatible A3000 open

default automatic hygiene flus

depressurised

with filter

functional principle

hygiene flushing

diameter nominal

inlet size

Locking mechanism

material fitting

minimum flow pressure

type of mixing

Parameterization

Pop-up waste set

power supply connection

position of power connection

power consumption

Type of power supply

protective system IP

with rosettes/cover plate

protective shutdown

no

0.1 l/s

yes

24h after the last activity

no

yes

electronic self-closing

yes

DN 15

G 3/8

Top section, non-ceramic

brass-look

1 bar

no

remote control

no

6,75 / 12 VDC / A3000 open

from bottom

1.5 Voltampere

Transformer

IP59K

no

yes



## KWC F5E

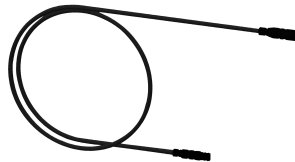
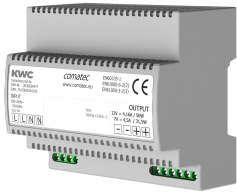
Electronic pillar tap for separate power supply

**Modell-Linie: F5E | F5EV1004**

Taps | Electronic taps

sound insulation	no
Spout	fixed
spout projection	125 mm
surface finish fitting	chromed
surface treatment fitting	polished
temperature limit	no
thermal disinfection	no
with transformer/power supply	no
type of mounting	tap hole
type of operation	sensor operation
type of sensor	opto-electronic sensor
type of tap	pillar tap
volume flow rate at 3 bar	0.08 l/s
water connection	hose (gland nut)
Accent colour	none
Basic colour	chrome-look (glossy)

### Mandatory Accessories



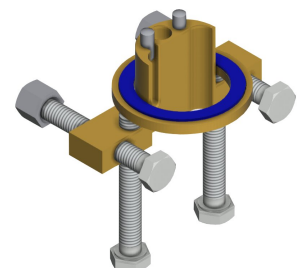
#### Power supply unit

**2030039477**  
ACEX9001

#### Extension cable 5 m

**2030043814**  
ACEX9010

### Optional Accessories



#### Bidirectional remote control for electronic fittings F3 and F5

#### 2-button remote control for fittings F3 and F5

#### Socket

**2030040334**

#### Anti-twist protection for F5S

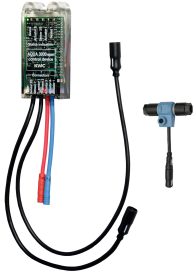
**2030035383**

## KWC F5E

Electronic pillar tap for separate power supply

Modell-Linie: F5E | F5EV1004  
Taps | Electronic taps

**2030036654**  
ACEX9005



Electronic module for wash basin taps F5

**2030041520**  
ACEX1002

**2030036849**  
ACEX9004

Electronic module EM5 with ID 02010, with flush box

**2030059118**  
ACEX1004

ACEX1001



PURETHERM under-table thermostat

**2030012758**  
PURE0031

ACXX1001



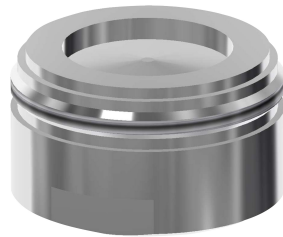
5.0 l/min aerator, angle-adjustable

**2030041326**  
ACXX1002



3.0 l/min. aerator

**2030041424**  
ASXX1008



Aerator 1.8 l/min

**2030041442**  
ACXX1005

### Spare Parts



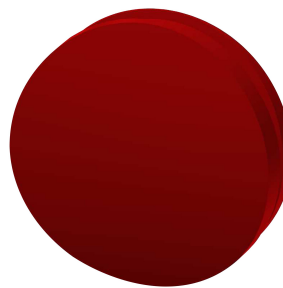
Aerator 5.0 l/min

**2030041011**  
ASXX1004



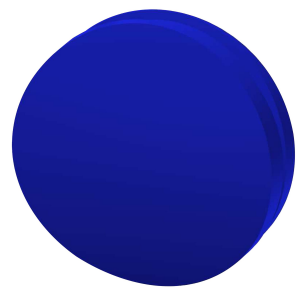
Cap

**2030041558**  
ASEX1007



Plug red

**2030041951**  
ASEX1009



Plug blue

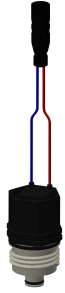
**2030041952**  
ASEX1010

## KWC F5E

Electronic pillar tap for separate power supply

Modell-Linie: F5E | F5EV1004

Taps | Electronic taps



Solenoid valve cartridge

**2030045522**  
ACXX9002



Hose

**2030041311**  
ASXX1005



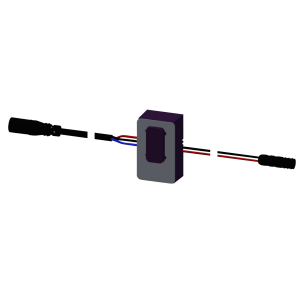
Quick-action fastener

**2030043596**  
ASEX1013



Water way

**2030041949**  
ASEX1008



Sensor, ID 01/00004

**2030041458**  
ASEX1005



In-wall power supply

**2030039825**  
ACEX9003



Mounting key

**2030041329**  
ACXX1003