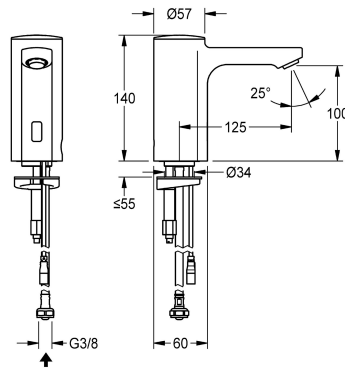


KWC F5E

Electronic pillar tap for separate power supply

Modell-Linie: F5E | F5EV1004
Taps | Electronic taps



KWC-No.

2030036158

2030039438

with flow regulator 3.0 l/min

volume flow rate at 3 bar

0.08 l/s

0.05 l/s

F5E pillar tap DN 15 for sanitary facilities, opto-electronically controlled. For connection to pre-mixed hot or cold water via hose and strainer. Control electronics, solenoid valve cartridge and sensor in all-metal housing, high-polished chromium-plated brass. Anti-theft aerator, design SLIM, with integrated flow regulator 5.0 l/min. Activated water hygiene flushing 24 hours after last activation,

safety switch-off with continuous reflection and saving of statistical data. With option for parameterization and communication via optional, bidirectional remote control. Separate power supply via power supply unit 6.75 V / 12 V DC or AQUA 3000 open system accessories.

Technical Data

with backflow preventer

calculation flow rate cold wat

compatible A3000 open

default automatic hygiene flus

depressurised

with filter

functional principle

hygiene flushing

diameter nominal

inlet size

Locking mechanism

material fitting

minimum flow pressure

type of mixing

Parameterization

Pop-up waste set

power supply connection

position of power connection

power consumption

Type of power supply

protective system IP

with rosettes/cover plate

protective shutdown

no

0.1 l/s

yes

24h after the last activity

no

yes

electronic self-closing

yes

DN 15

G 3/8

Top section, non-ceramic

brass

1 bar

no

remote control

no

6,75 / 12 VDC / A3000 open

from bottom

1.5 Voltampere

Transformer

IP59K

no

yes



KWC F5E

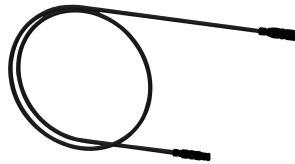
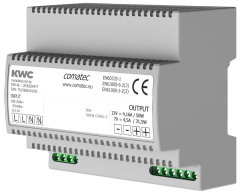
Electronic pillar tap for separate power supply

Modell-Linie: F5E | F5EV1004

Taps | Electronic taps

sound insulation	no
Spout	fixed
spout projection	125 mm
surface finish fitting	chromed
surface treatment fitting	polished
temperature limit	no
thermal disinfection	no
with transformer/power supply	no
type of mounting	tap hole
type of operation	sensor operation
type of sensor	opto-electronic sensor
type of tap	pillar tap
volume flow rate at 3 bar	0.08 l/s
water connection	hose (gland nut)
Accent colour	none
Basic colour	chrome-look (glossy)

Mandatory Accessories



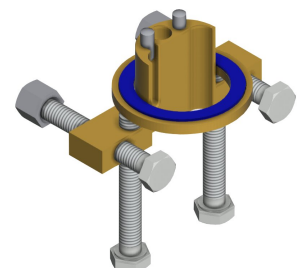
Power supply unit

2030039477
ACEX9001

Extension cable 5 m

2030043814
ACEX9010

Optional Accessories



Bidirectional remote control for electronic fittings F3 and F5

2-button remote control for fittings F3 and F5

Socket

2030040334

Anti-twist protection for F5S

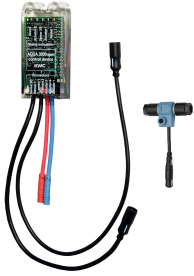
2030035383

KWC F5E

Electronic pillar tap for separate power supply

Modell-Linie: F5E | F5EV1004
Taps | Electronic taps

2030036654
ACEX9005



Electronic module for wash basin taps F5

2030041520
ACEX1002



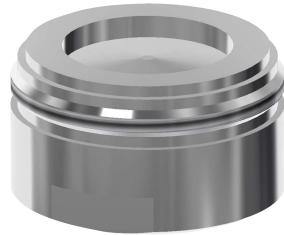
3.0 l/min. aerator

2030041424
ASXX1008

2030036849
ACEX9004

Electronic module EM5 with ID 02010, with flush box

2030059118
ACEX1004



Aerator 1.8 l/min

2030041442
ACXX1005

ACEX1001



PURETHERM under-table thermostat

2030012758
PURE0031

ACXX1001



5.0 l/min aerator, angle-adjustable

2030041326
ACXX1002

Spare Parts



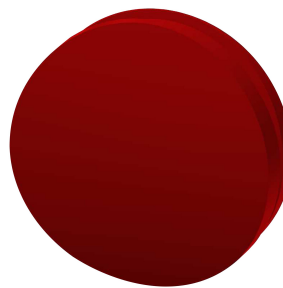
Aerator 5.0 l/min

2030041011
ASXX1004



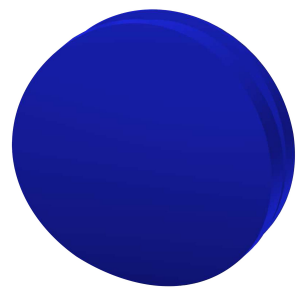
Cap

2030041558
ASEX1007



Plug red

2030041951
ASEX1009



Plug blue

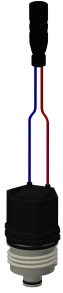
2030041952
ASEX1010

KWC F5E

Electronic pillar tap for separate power supply

Modell-Linie: F5E | F5EV1004

Taps | Electronic taps



Solenoid valve cartridge

2030045522
ACXX9002



Hose

2030041311
ASXX1005



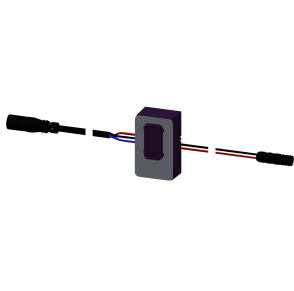
Quick-action fastener

2030043596
ASEX1013



Water way

2030041949
ASEX1008



Sensor, ID 01/00004

2030041458
ASEX1005



In-wall power supply

2030039825
ACEX9003



Mounting key

2030041329
ACXX1003