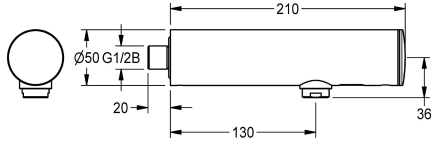


KWC F3E Electronic bib tap with battery operation

Modell-Linie: F3E | F3EV1004
Taps | Electronic taps



KWC-No.

2030036177

2030040224

with flow regulator 3.0 l/min

volume flow rate at 3 bar

0.1 l/s

0.05 l/s

F3E bib tap DN 15 for wall mounting for sanitary facilities, optoelectronically controlled. For connection to pre-mixed hot or cold water. Control electronics, solenoid valve cartridge, 6 V lithium battery (CR-P2) and sensor in all-metal housing, high-polished chromium-plated brass. Aerator with integrated flow regulator 6.0

l/min. Activated water hygiene flushing 24 hours after last activation, safety switch-off with continuous reflection and saving of statistical data. With option for parameterization and communication via optional, bidirectional remote control.

Technical Data

with backflow preventer

no

calculation flow rate cold wat

0.1 l/s

compatible A3000 open

no

default automatic hygiene flus

24h after the last activity

depressurised

no

with filter

yes

functional principle

electronic self-closing

hygiene flushing

yes

diameter nominal

DN 15

Locking mechanism

Top section, non-ceramic

material fitting

brass-look

minimum flow pressure

1 bar

type of mixing

no

number of batteries

1

Parameterization

remote control

Pop-up waste set

no

power supply connection

Battery 6 V

power consumption

1.5 Voltampere

Type of power supply

Battery

protective system IP

IP59K

with rosettes/cover plate

no

protective shutdown

yes

sound insulation

no

Spout

fixed



KWC

F3E Electronic bib tap with battery operation

Modell-Linie: F3E | F3EV1004

Taps | Electronic taps

| | |
|-------------------------------|--------------------------------|
| spout projection | 130 mm |
| surface finish fitting | chromed |
| surface treatment fitting | polished |
| temperature limit | no |
| thermal disinfection | automatic thermal disinfection |
| with transformer/power supply | no |
| type of batteries | CR-P2 Lithium battery 6V |
| type of mounting | wall mounting |
| type of operation | sensor operation |
| type of sensor | opto-electronic sensor |
| type of tap | bib tap |
| volume flow rate at 3 bar | 0.1 l/s |
| water connection | threaded connection (external) |
| Accent colour | none |
| Basic colour | chrome-look (glossy) |

Optional Accessories



Bidirectional remote control for electronic fittings F3 and F5

2030036654
ACEX9005



2-button remote control for fittings F3 and F5

2030036849
ACEX9004



Aerator

2000101160
ZAQUA087



3.0 l/min. aerator

2030041424
ASXX1008



Extension adapter for F3E bib tap

2030043823
ACEV1001

KWC

F3E Electronic bib tap with battery operation

Modell-Linie: F3E | F3EV1004

Taps | Electronic taps

Spare Parts



Cover cap

2030049344
ASEV1004



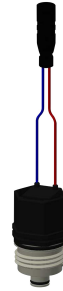
Lithium battery 6 V

2000104846
EPRTR0008



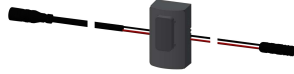
Foil

2030049346
ASEV1005



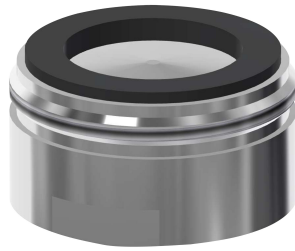
Solenoid valve cartridge

2030045522
ACXX9002



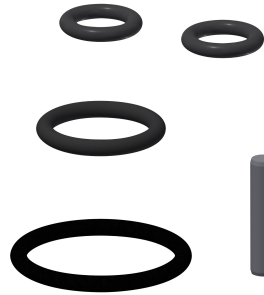
Sensor, ID 01/00001

2030041447
ASEX1001



Aerator 6.0 l/min

2000104691
ASXX1015



Spare part set

2030042426
ASEX1011



Service set

2030049348
ASEV1006



O-ring, red

2030042439
ASEV1002



O-ring, blue

2030042440
ASEV1002