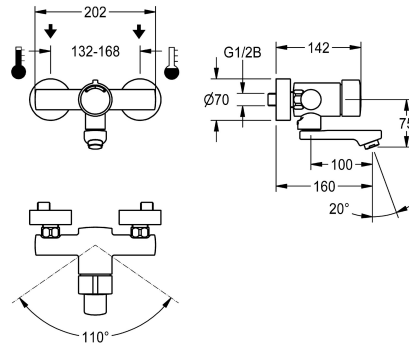


## KWC

### F3S-Mix self-closing wall-mounted mixer

Modell-Linie: F3S | F3SM1003

Taps | Self closing taps



#### KWC-No.

**2030036196**

Projection 160 mm

**2030036195**

Projection 100 mm

**2030036197**

Projection 220 mm

#### spout projection

160 mm

100 mm

220 mm

#### volume flow rate at 3 bar

0.1 l/s

0.1 l/s

0.1 l/s

F3S-Mix self-closing wall-mounted mixer DN 15 as single-mixer tap for wall mounting with lockable swivelling spout, for sanitary facilities. Self-closing mixing cartridge, hydraulically controlled, piston-free design, self-closing, stepless adjustment of flow duration. With adjustable, turn-proof temperature stop. Connects to

hot and cold water. Casing, high-polished chromium-plated brass. Laminar jet controller with integrated flow regulator 6.0 l/min. With adjustable connections, backflow preventer, strainers and screw rosettes. Projection 160 mm.

#### Technical Data

with backflow preventer

yes

calculation flow rate cold wat

0.07 l/s

calculation flow rate hot wate

0.07 l/s

compatible A3000 open

no

depressurised

no

with filter

yes

adjustable flow time

yes

functional principle

hydraulic self-closing

hygiene flushing

no

diameter nominal

DN 15

inlet size

G 1/2 B

Locking mechanism

Top section, non-ceramic

material fitting

brass

maximum flow time

20 Seconds

minimum flow pressure

1 bar

minimum flow time

5 Seconds

type of mixing

yes

Pop-up waste set

no

with rosettes/cover plate

yes

protective shutdown

no

sound insulation

no

Spout

rotating, bottom

## KWC

### F3S-Mix self-closing wall-mounted mixer

Modell-Linie: F3S | F3SM1003

Taps | Self closing taps

spout projection	160 mm
surface finish fitting	chromed
surface treatment fitting	polished
temperature limit	yes
thermal disinfection	no
type of mounting	wall mounting
type of operation	manual operation
type of tap	bib tap
volume flow rate at 3 bar	0.1 l/s
water connection	S-connections
Accent colour	none
Basic colour	chrome-look (glossy)

#### Optional Accessories



#### Screw connection

**2030041416**  
ACXX9001

#### Spare Parts



#### Functional part

**2000104372**  
ETAPS0001