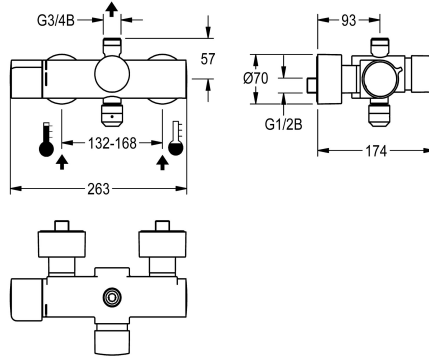


KWC

F5S-Therm self-closing thermostatic wall-mounted mixer

Modell-Linie: **F5S | F5ST2002**
Showers | Self closing showers



KWC-No.

2030032978

2030036208

with automatic shower pipe draining

shower pipe draining

no

yes

F5S-Therm self-closing thermostatic wall-mounted mixer DN 15 for wall mounting, for shower facilities. Hydraulically controlled, connects to hot and cold water. With a mechanism for an optional water hygiene unit for automatic water hygiene flushing and storage of statistical data. FRAMIC self-closing cartridge, hydraulically controlled, low-maintenance and stagnation-free, with ceramic disc technology, self-closing, flow pressure-independent due to medium-separated design. Stepless adjustment of flow

duration. Thermostat with metal handle with adjustable and turn-proof temperature stop, with the option for a manual thermal disinfection. Scald-protected Safe-Touch housing with outlet on top. G 3/4 B, for installation of bent outlet or wall-mounted shower pipe. All-metal construction, high-polished chromium-plated brass. With adjustable and turn-proof connections with backflow preventer and strainers, completely covered with depth-adjustable screw rosettes. Version with automatic shower pipe draining.

Technical Data

additional connections

no

with backflow preventer

yes

calculation flow rate cold wat

0.15 l/s

calculation flow rate hot water

0.15 l/s

circulation

no

compatible A3000 open

no

connection with pay water disp

not possible

with filter

yes

adjustable flow time

yes

functional principle

hydraulic self-closing

for hand shower

no

hygiene flushing

prepared

diameter nominal

DN 15

inlet size

G 1/2 B

Locking mechanism

Top section, ceramic

material fitting

brass-look

maximum flow time

35 Seconds

minimum flow pressure

1 bar

minimum flow time

5 Seconds

type of mixing

with thermostat

with rosettes/cover plate

yes

protective shutdown

no



KWC

F5S-Therm self-closing thermostatic wall-mounted mixer

Modell-Linie: F5S | F5ST2002

Showers | Self closing showers

shower pipe draining	yes
sound insulation	no
surface finish fitting	chromed
surface treatment fitting	polished
temperature limit	yes
thermal disinfection	manual
type of mounting	wall mounting
type of operation	manual operation
type of shower	wall fitting
volume flow rate at 3 bar	0.3 l/s
water connection	S-connections
position of water connection	from backside
Accent colour	none
Basic colour	chrome-look (glossy)

Optional Accessories



AQUAJET-Comfort shower head

2030021283
SHAC0008



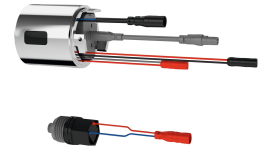
AQUAJET-Slimline shower head

2000103757
AQUA757



Shower pipe

2030041522
ACSX2002



Hygiene unit for F5S-Therm

2030041162
ACST9001



Bent outlet

2030050434
ACXX2005



Bent outlet

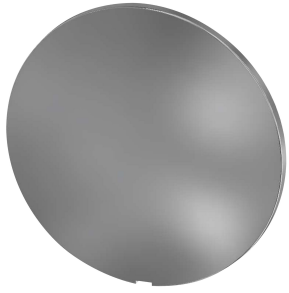
2030050435
ACXX2006

Spare Parts

KWC

F5S-Therm self-closing thermostatic wall-mounted mixer

Modell-Linie: F5S | F5ST2002
Showers | Self closing showers



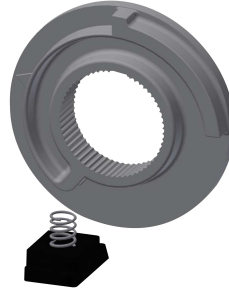
Cover

2030003258
EAQLT0002



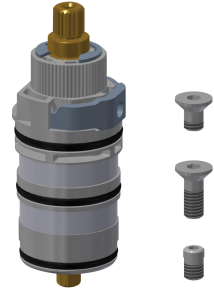
Temperature handle

2030050541
ASXT9004



Temperature stop

2030003296
EAQLT0003



Thermocouple

2030003300
EAQLT0004



Screw rosette

2030046777
ASXX9003



Mounting set

2030003401
EAQLT0009



Plug chromed

2030053006
ASSX9004



Push cap

2030050542
ASST9001



Safety ring

2030048357
ASSX9003



FRAMIC Self-closing cartridge

2030046145
ASSX9001