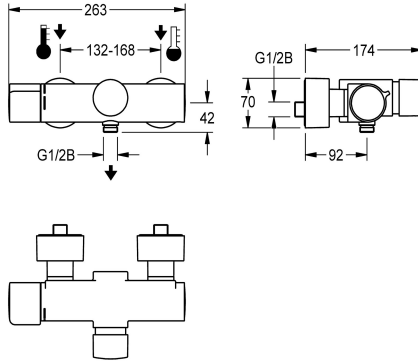


## KWC F5S-Therm Self-closing thermostatic mixer with hand shower connection

Modell-Linie: F5S | F5ST2003  
Showers | Self closing showers



### KWC-No.

**2030036209**

F5S-Therm self-closing thermostatic wall-mounted mixer DN 15 for wall mounting, for shower facilities. Hydraulically controlled, connects to hot and cold water. With a mechanism for an optional water hygiene unit for automatic water hygiene flushing and storage of statistical data. FRAMIC self-closing cartridge, hydraulically controlled, low-maintenance and stagnation-free, with ceramic disc technology, self-closing, flow pressure-independent due to medium-separated design. Stepless adjustment of flow

duration. Thermostat with metal handle with adjustable and turn-proof temperature stop, with the option for a manual thermal disinfection. Scald-protected, Safe-Touch housing with hand shower connection, G 1/2 B. All-metal construction, high-polished chromium-plated brass. With adjustable and turn-proof connections with backflow preventer and strainers, completely covered with depth-adjustable screw rosettes.

### Technical Data

additional connections	no
with backflow preventer	yes
calculation flow rate cold wat	0.15 l/s
calculation flow rate hot wate	0.15 l/s
circulation	no
compatible A3000 open	no
connection with pay water disp	not possible
with filter	yes
adjustable flow time	yes
functional principle	hydraulic self-closing
for hand shower	yes
hygiene flushing	prepared
diameter nominal	DN 15
inlet size	G 1/2 B
Locking mechanism	Top section, ceramic
material fitting	brass-look
maximum flow time	35 Seconds
minimum flow pressure	1 bar
minimum flow time	5 Seconds
type of mixing	with thermostat
with rosettes/cover plate	yes
protective shutdown	no
shower pipe draining	no



## KWC F5S-Therm

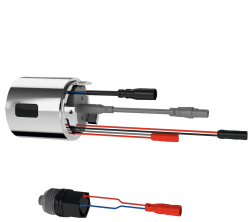
Self-closing thermostatic mixer with hand shower connection

**Modell-Linie: F5S | F5ST2003**

Showers | Self closing showers

sound insulation	no
surface finish fitting	chromed
surface treatment fitting	polished
temperature limit	yes
thermal disinfection	manual
type of mounting	wall mounting
type of operation	manual operation
type of shower	wall fitting
volume flow rate at 3 bar	0.3 l/s
water connection	S-connections
position of water connection	from backside
Accent colour	none
Basic colour	chrome-look (glossy)

### Optional Accessories



**Hygiene unit for F5S-Therm**

**2030041162**  
ACST9001



**Hand shower**

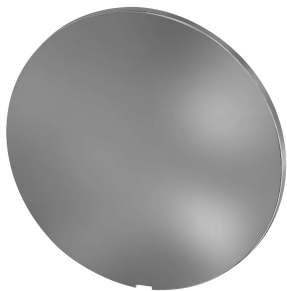
**2030051216**  
ACXX2007



**Shower bracket**

**2030051217**  
ACXX2008

### Spare Parts



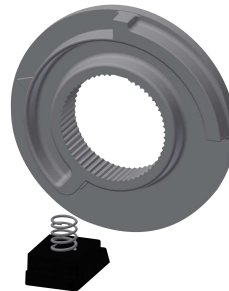
**Cover**

**2030003258**  
EAQLT0002



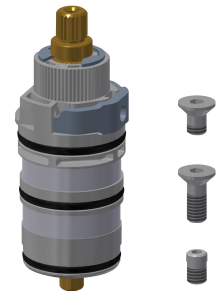
**Temperature handle**

**2030050541**  
ASXT9004



**Temperature stop**

**2030003296**  
EAQLT0003



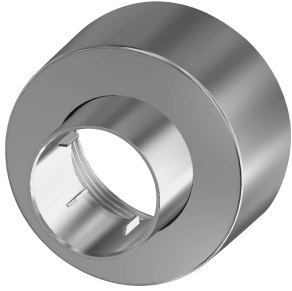
**Thermocouple**

**2030003300**  
EAQLT0004

## KWC F5S-Therm

Self-closing thermostatic mixer with hand shower connection

Modell-Linie: F5S | F5ST2003  
Showers | Self closing showers



**Screw rosette**

**2030046777**  
ASXX9003



**Mounting set**

**2030003401**  
EAQLT0009



**Plug chromed**

**2030053006**  
ASSX9004



**Push cap**

**2030050542**  
ASST9001



**Safety ring**

**2030048357**  
ASSX9003



**FRAMIC Self-closing cartridge**

**2030046145**  
ASSX9001