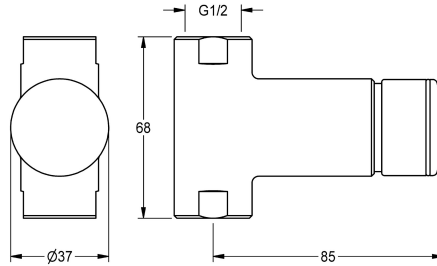


## KWC

### F3S self-closing straight-way valve

Modell-Linie: **F3S | F3SV2004**  
Showers | Self closing showers



#### KWC-No.

**2030037525**

DN 15 self-closing straight-way valve

F3S self-closing straight-way valve DN 15 for surface mounting for shower facilities. Self-closing functional part, hydraulically controlled, piston-free design, self-closing, stepless adjustment of

flow duration. For connection to pre-mixed hot water or cold water. Casing including changeable valve seat, with internal thread G 1/2, high-polished chromium-plated brass.

#### Technical Data

additional connections	no
with backflow preventer	no
calculation flow rate cold wat	0.15 l/s
circulation	no
connection with pay water disp	not possible
with filter	no
adjustable flow time	yes
functional principle	hydraulic self-closing
for hand shower	no
hygiene flushing	no
diameter nominal	DN 15
inlet size	G 1/2
Locking mechanism	Top section, non-ceramic
material fitting	brass-look
maximum flow time	35 Seconds
minimum flow pressure	1 bar
minimum flow time	5 Seconds
type of mixing	no
with rosettes/cover plate	no
protective shutdown	no
shower pipe draining	no
sound insulation	no
surface finish fitting	chromed
surface treatment fitting	polished
temperature limit	no
thermal disinfection	no

## KWC

### F3S self-closing straight-way valve

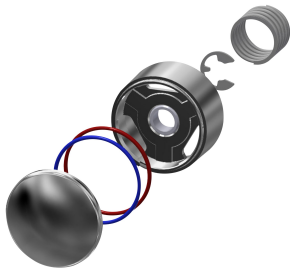
Modell-Linie: F3S | F3SV2004

Showers | Self closing showers

type of mounting
type of operation
type of shower
volume flow rate at 3 bar
water connection
position of water connection
Accent colour
Basic colour

pipe mounting
manual operation
wall fitting
0.2 l/s
threaded connection (external)
from bottom
none
chrome-look (glossy)

### Spare Parts



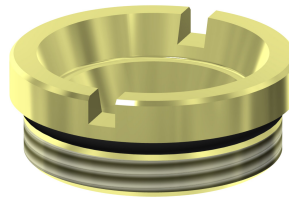
Push cap

**2030042960**  
ASSV2001



Functional part

**2000104352**  
ESHOW0001



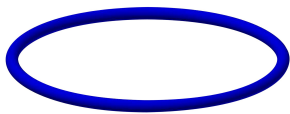
Valve seat DN 15

**2000104790**  
ESHOW0040



O-Ring, red

**2030042961**  
ASSV2002



O-Ring, blue

**2030042962**  
ASSV2003