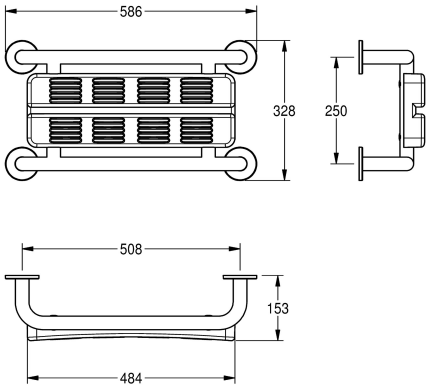
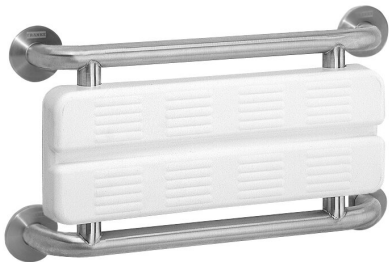




KWC CONTINA
Back support

Modell-Linie: CONTINA | CNTX400WE
Grab rails | Shower seats and backs



KWC-No.

2030038260

Back support for wall mounting, stainless steel, surface satin finished, 32 mm pipe diameter, material thickness 1.2 mm, 150 mm dimension to wall, prefixed back support made of white polyethylene, plastic rubber stop absorber, with four stainless steel

covers for hidden mounting, includes stainless steel screws and dowels.

Dimensions 586 x 328 x 153 mm (W x H x D)

Technical Data

back
colour
number of fixing points
hidden fixing
hinged
material
material code
material thickness
overall depth
overall height
overall width
pipe diameter
surface finish
type of fixing
type of mounting

yes
white
4
yes
no
stainless steel
1.4301 Chrome Nickel steel V2A
1.2 mm
153 mm
328 mm
586 mm
32 mm
satin finished
screw
wall mounting