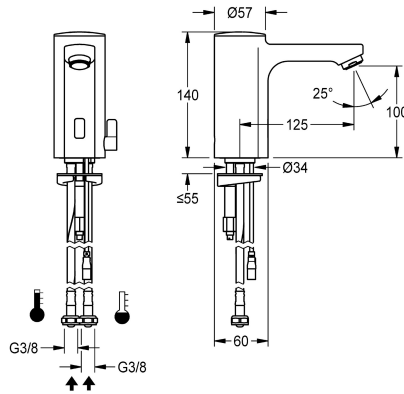


## KWC F5E-Mix

Electronic pillar mixer for separate power supply

Modell-Linie: F5E | F5EM1010

Taps | Electronic taps



### KWC-No.

2030036159

2030039434

with flow regulator 3.0 l/min

### volume flow rate at 3 bar

0.08 l/s

0.05 l/s

F5E-Mix pillar mixer DN 15 for sanitary facilities, opto-electronically controlled. For connection to hot and cold water via hoses with integrated backflow preventer and strainers. Control electronics, solenoid valve cartridge and sensor in all-metal housing, high-polished chromium-plated brass. Temperature lever with adjustable, turn-proof temperature stop as well as conversion set for concealed mixing device. Aerator with integrated flow regulator

3.0 l/min. Activated water hygiene flushing 24 hours after last activation, safety switch-off with continuous reflection and saving of statistical data. With option for parameterization and communication via optional, bidirectional remote control. Separate power supply via power supply unit 6.75 V / 12 V DC or AQUA 3000 open system accessories.

### Technical Data

with backflow preventer

calculation flow rate cold wat

calculation flow rate hot wate

compatible A3000 open

default automatic hygiene flus

depressurised

with filter

functional principle

hygiene flushing

diameter nominal

inlet size

Locking mechanism

material fitting

minimum flow pressure

type of mixing

Parameterization

Pop-up waste set

power supply connection

position of power connection

power consumption

Type of power supply

protective system IP

yes

0.07 l/s

0.07 l/s

yes

24h after the last activity

no

yes

electronic self-closing

yes

DN 15

G 3/8

Top section, non-ceramic

brass

1 bar

yes

remote control

no

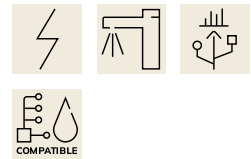
6,75 / 12 V DC / A3000 open

from bottom

1.5 Voltampere

Transformer

IP59K



## KWC F5E-Mix

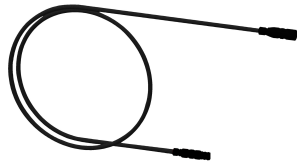
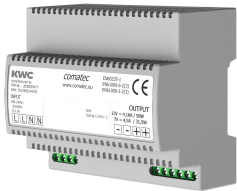
Electronic pillar mixer for separate power supply

Modell-Linie: F5E | F5EM1010

Taps | Electronic taps

with rosettes/cover plate	no
protective shutdown	yes
sound insulation	no
Spout	fixed
spout projection	125 mm
surface finish fitting	chromed
surface treatment fitting	polished
temperature limit	yes
thermal disinfection	no
with transformer/power supply	no
type of mounting	tap hole
type of operation	sensor operation
type of sensor	opto-electronic sensor
type of tap	pillar tap
volume flow rate at 3 bar	0.05 l/s
water connection	hose (gland nut)
Accent colour	none
Basic colour	chrome-look (glossy)

### Mandatory Accessories



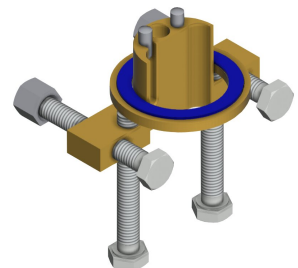
#### Power supply unit

**2030039477**  
ACEX9001

#### Extension cable 5 m

**2030043814**  
ACEX9010

### Optional Accessories



## KWC F5E-Mix

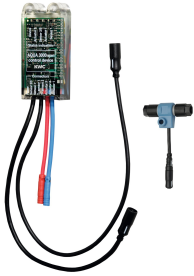
Electronic pillar mixer for separate power supply

Modell-Linie: F5E | F5EM1010

Taps | Electronic taps

**Bidirectional remote control for  
electronical fittings F3 and F5**

**2030036654**  
ACEX9005



**2-button remote control for fittings F3  
and F5**

**2030036849**  
ACEX9004

**Socket**

**2030040334**  
ACEX1001



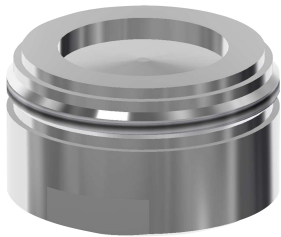
**Anti-twist protection for F5S**

**2030035383**  
ACXX1001



**Electronic module for wash basin taps  
F5**

**2030041520**  
ACEX1002



**Electronic module EM5 with ID 02010,  
with flush box**

**2030059118**  
ACEX1004



**PURETHERM under-table thermostat**

**2030012758**  
PURE0031



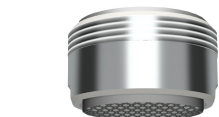
**5.0 l/min aerator, angle-adjustable**

**2030041326**  
ACXX1002



**Aerator 1.8 l/min**

**2030041442**  
ACXX1005



**Theft-proof housing for aerator**

**2000104778**  
ZTAPS0005



### Spare Parts

**3.0 l/min. aerator**

**2030041424**



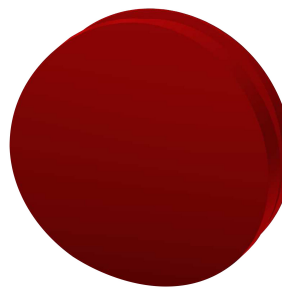
**Cap**

**2030041558**



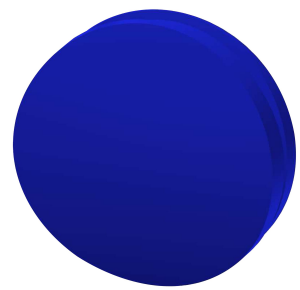
**Plug red**

**2030041951**



**Plug blue**

**2030041952**



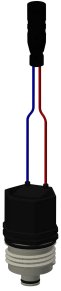
## KWC F5E-Mix

Electronic pillar mixer for separate power supply

Modell-Linie: F5E | F5EM1010

Taps | Electronic taps

ASXX1008



Solenoid valve cartridge

**2030045522**  
ACXX9002

ASEX1007



Temperature selection lever

**2030041431**  
ASEM1001

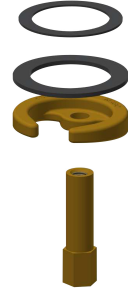
ASEX1009



Hose

**2030041320**  
ASXM1001

ASEX1010



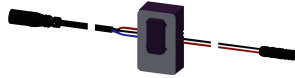
Quick-action fastener

**2030043596**  
ASEX1013



Water way

**2030041949**  
ASEX1008



Sensor, ID 01/00004

**2030041458**  
ASEX1005